



Shifa Tameer-e-Millat University

شفا تعمیرِ ملت یونیورسٹی



SHIFA COLLEGE OF PHARMACEUTICAL SCIENCES

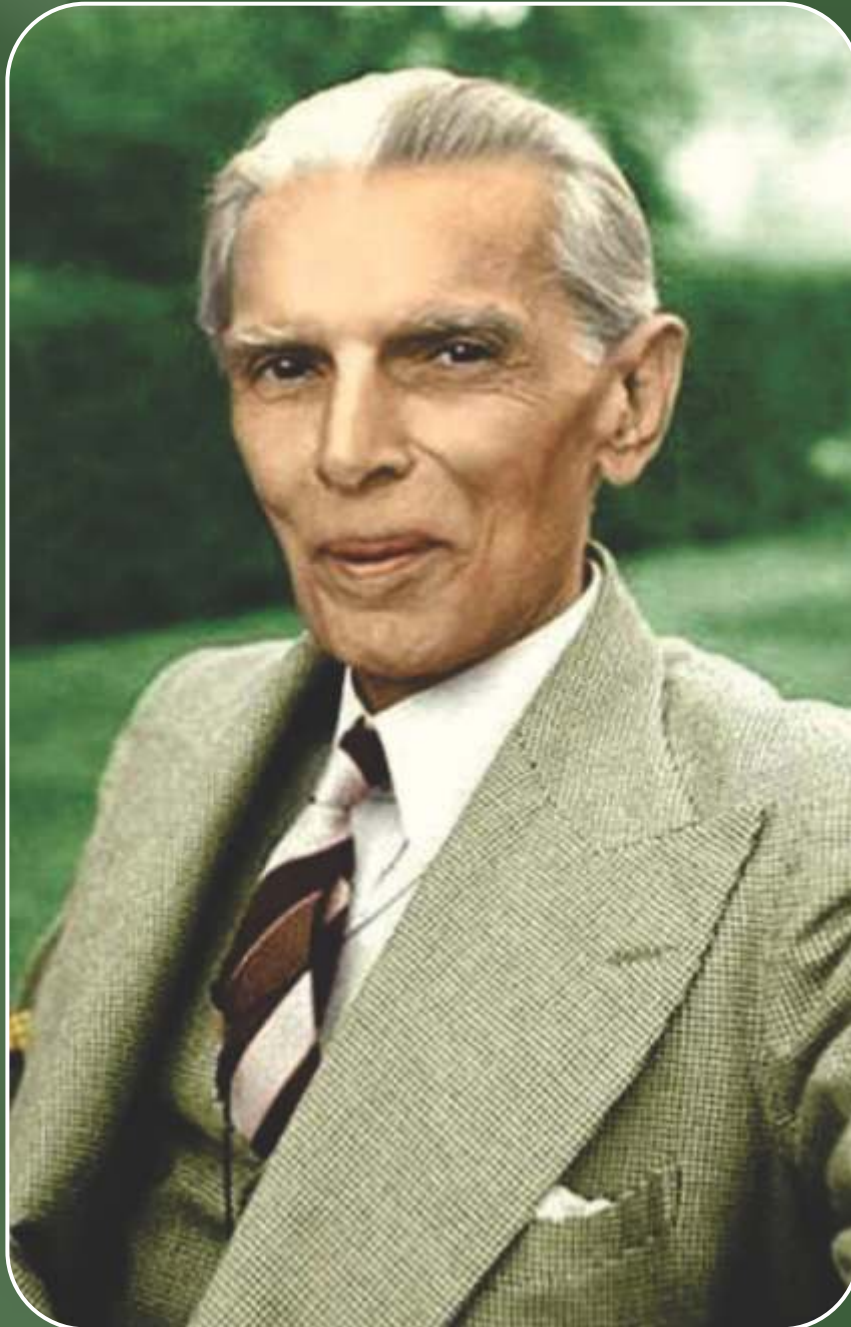
PROSPECTUS

2021-22

- Doctor of Pharmacy (Pharm. D)
- M.Phil. Pharmacology (Molecular)
- M.Phil. Clinical Pharmacy Practice
- M.Phil. Pharmaceutical Chemistry
- PhD Pharmacology
- PhD Pharmaceutical Chemistry







Quaid's Message

My young friends, I look forward to you as the real makers of Pakistan, do not be exploited and do not be misled. Create amongst yourselves complete unity and solidarity. Set an example of what youth can do. Your main occupation should be in fairness to yourself, to your parents, in fairness to the State, to devote your attention to your studies. If you fritter away your energies now, you will always regret.

***Quaid-e-Azam Mohammad Ali Jinnah** addressing the youngsters in East Pakistan, 1948*

Table of Contents

Chancellor's Message	01	– Foreign Seats	56
Vice Chancellor's Message	02	– Guidelines to Earn Doctor of Pharmacy Degree	57
Dean's Message	03	– Examination and Grading Policy	58
Vision	04	M.Phil Pharmacology (Molecular) Program	59
Mission	05	– Scheme of Studies	60
A Journey Through Time.....	06	M.Phil Clinical Pharmacy Practice Program	61
Envisioned Competencies	07	– Scheme of Studies	62
Introduction of SCPS	08	M.Phil Pharmaceutical Chemistry Program	63
Career Choices	09	– Scheme of Studies	64
Salient Features	10	Ph.D. Pharmacology	65
Messages from the Program Team	11	– Scheme of Studies	66
Introduction to Departmental Structure	12	Ph.D. Pharmaceutical Chemistry	67
– Department of Basic Medical Sciences	12	– Scheme of Studies	68
– Department of Pharmaceutical Chemistry	15	Guidelines to Earn a Postgraduate Degree	69
– Department of Pharmaceutics	18	Research Work Guideline for Postgraduate Studies at STMU	70
– Department of Pharmacognosy	21	Examination and Grading Policy	71
– Department of Pharmacy Practice	22	Admission Procedure	72
– Department of Allied Sciences & Technology	29	Eligibility Criteria/ Prerequisites	74
– Inter-Departmental Faculty	31	– Doctor of Pharmacy (Pharm. D) Program	74
Premises and Infrastructure Facilities	36	– M.Phil Program	75
Affiliated Hospitals and Community Pharmacies	38	– PhD Program	75
Industry-Academia Liaison	40	Fee and Charges	76
Research Facilities	41	– Doctor of Pharmacy (Pharm. D) Program	76
Student Affairs Office	43	– M.Phil Program	79
– Message from Advisor Student Affairs	44	– PhD Program	81
– Office of Student Engagement and Participation	45	Financial Assistance and Merit Award Program	83
Doctor of Pharmacy program	48	Students Conduct and Discipline	86
– Program Educational Objectives	49	Contact Us	89
– Competency-Driven Curriculum	50		
– Vertizontal Alignment of Meta-Curricular Academic Streams	51		
– Program Design	52		
– Scheme of Studies	53		

Message from the Chancellor



Dr. Manzoor H. Qazi

MBBS, Diplomate American Board
(Internal Medicine & Cardiology)
Chief Executive Officer
Shifa International Hospitals Ltd.

The era of accelerating change, we are now witnessing has exposed our world to a greater challenge of accomplishing more with our time. In an attempt to get more done, we must keep pace with this incessant change and continue to widen our intellectual horizon by acquiring professional management, technical and research skills. Therefore, we as the developing nation stand in need of an environment that promotes education and training required for high-demand careers.

I am honored to be the chancellor of Shifa Tameer-e-Millat University (STMU), Islamabad which is committed to ensure excellence in all its educational programs coupled with dynamic and comprehensive academic distinction, whereby, making the learning experience of its MBBS, Nursing, Pharmacy, Physical Therapy, Bio Technology and Management students richer, challenging, germane, and stimulating.

The students at STMU, Islamabad benefit from state-of-the-art facilities and resources, including innovative and student-centered curriculum allowing for the early development of professional skills and behaviors promoting collaborative learning, critical thinking and reflection-skills essential for brilliant career.

Our faculty is eminently qualified, and committed to provide students with the essential academic, professional, and personal skills required for competing in today's challenging employment environment. In addition to teaching and mentoring of students, our faculty members prove to be avid consumers as well as producers of research helping them staying current in their academic disciplines.

STMU enriches the students' campus life by promoting co-curricular activities, clubs/societies and sports helping students mold their lives to become well rounded people and learning the art of living and working together.

STMU has grown to its current position as a provider of quality education through its commitment to excellence; we are resolute to continue growing from strength to strength and raising the bar for top-notch education.

We invite you to be a part of our institution to gain practical knowledge in your targeted field, acquire leadership skills, and to learn the art of community service.

It is indeed my proud privilege to lead Shifa Tameer-e-Millat University (STMU), Islamabad, as Vice Chancellor. STMU was established with a vision to be a world-class institution for academic excellence geared towards the development of a prosperous society and the university, in its pursuit of the same, is striving hard to expand the frontiers of knowledge through world-class teaching, scholarship, research and the lifelong engagement of its students and alumni to contribute to society at large. This University has come a long way in adding new dimensions to the higher education in the country and is currently running both vertical and horizontal integrated programs in Medicine, Nursing, Pharmacy, Rehabilitation sciences, Medical Technology, Management Sciences, Clinical Psychology, Nutrition and Health Professions Education. In view of the emerging need of the hour, University is planning to start Law, Engineering and Computer Science programs at undergraduate and post graduate level in near future.

STMU is a vibrant center of quality, dedicated to providing valuable education in various fields, in accordance to the specific developing needs of our country. At STMU, we are committed to provide finest education and a congenial environment for the holistic growth & development of our students. To achieve this, the curriculums followed by various faculties are distinctively designed and continuously updated to reach all types of learners, using a combination of strategies to enhance learning and inspiration.

Our highly skilled, educated and committed teachers put their hearts and souls in training students to become globally accepted personalities possessing good interpersonal skills, proper aptitudes and attitudes, problem solving abilities, art of working in teams, and leadership qualities. While doing so, due care is taken to imbibe values, social adaptability and human sensibility to become valuable, responsible and participative citizen of the country. In today's dynamic and competitive world, things are changing fast, and we at STMU stand ready and equipped to meet the challenges of improving economic and social well-being. The university has generated tremendous momentum for advancement on an accelerated path and our indigenous research work and innovations will undoubtedly contribute to the society and world community at larger scale.

I confidently believe that the mother-lode of Pakistan's untapped wealth is at institutions such as STMU, where dedicated young people can refine their impulse to innovate through pioneering, genuine and tangible research. The rich experience of establishing, Shifa International Hospital Islamabad, a premier, comprehensive and iconic health care facility in South East Asia is a living example of allegiance, commitment and devotions of Shifa family is being undeniably deciphered at STMU. We welcome all the students who chose to be a part of this esteemed university, we are sure that the strength of our reputation will not only benefit our students, but also the boundless global community that will gain from Shifa Family's knowledge leadership.

Message from the Vice Chancellor



Dr. Mohammad Iqbal Khan

MD; FRCS; MHPE
Professor of Surgery

Message from the Dean



Prof. Dr. Tausif A. Rajput

Ph.D., M.Phil, B.Pharm (R.Ph., Pak.)
Principal/Dean
Shifa College of Pharmaceutical Sciences
Faculty of Pharmaceutical and Allied
Health Sciences

Pharmacy plays a crucial role in the health care, and drug delivery system of a country. Pakistan needs highly competent pharmacy professionals to meet the challenges of 21st century. Keeping in view this perspective, we are determined to prepare pharmacy graduates who can play an effective role in the rational use of drugs, adverse drugs action monitoring, safe and effective drug delivery system, proper storage of drugs, pharmaceutical management and research and development.

Pharmacists play a vital role in the health of their communities in a variety of settings including hospitals, long-term care facilities, hospital pharmacies, community pharmacies, production facilities, research & development, regulatory agencies and within the pharmaceutical industry.

The mission of Shifa College of Pharmaceutical Sciences (SCPS) is to inspire, educate and engage current and future pharmacists in cutting edge research and to lead practice development to serve the education and health sector for the people of Pakistan and the World. In order to achieve our mission, we apply innovative and proven educational techniques to produce pharmacists who

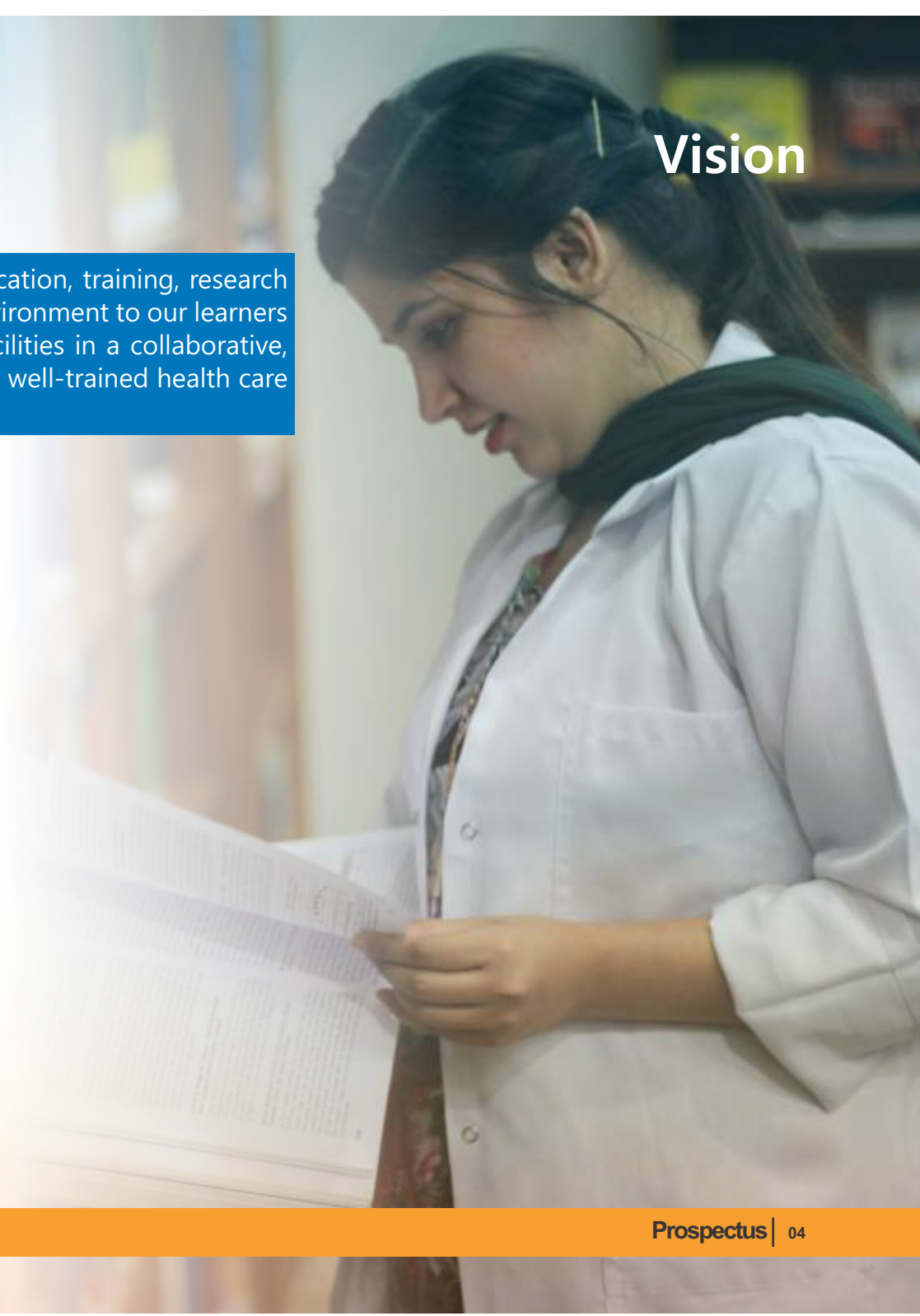
possess the skills and knowledge they need to serve the community in an ethical and professional manner, and make available best possible care for the ailing humanity.

Our prestigious institute is pioneer in implementing the Integrated Contextual Modular Curriculum among the Pharmacy institutes of Pakistan to meet the international needs. Our academic program is accredited by the Pharmacy Council of Pakistan (PCP), Academic Council of STMU and the Higher Education Commission (HEC). We shall make every effort to develop an excellent learning environment to envision our students unfold their potential, closely interact with the faculty and professionals from the pharmaceutical industry and participate actively in various extracurricular activities.

We remain committed to extending the scope of the profession and preparing tomorrow's leaders to best serve the needs of the nation. I extend warmest welcome to all the new entrants in our undergraduate and/ or postgraduate program and wish you success in all your endeavors for a bright future and career progression.

Vision

We will be the national leaders in the field of pharmacy education, training, research and service as we are committed to providing a conducive environment to our learners to experience world class teaching, research and practice facilities in a collaborative, interdisciplinary and diverse manner to produce effective and well-trained health care providers.



Mission

Shifa College of Pharmaceutical Sciences inspires, educates and engages current and future pharmacists in cutting edge research and leads practice development to serve the education and health sector for the people of Pakistan and the World.

The mission of Shifa College of Pharmaceutical Sciences (SCPS) is to contribute towards the health and well-being of the Pakistani nation by providing state-of-the-art teaching, therapeutics related research, patient care training and professional services. We pride ourselves in promoting a culture of respect, equity and inclusion to all the learners irrespective of their gender, ethnic, religious and financial / socioeconomic background.

Shifa College of Pharmaceutical Sciences supports and promotes the larger missions of Shifa Tameer-e-Millat University (STMU), Shifa International Hospitals (SIH), Shifa Foundation and Tameer-e-Millat Foundation.

We believe in **SPREADING** our diverse experience through:

Sharing our professional expertise with the new generation of pharmacists, policy makers and other health care providers

Promoting rational use of medicines by training them in the field of clinical pharmacy practice

Research based training programs to reveal and share basic, clinical and translational aspects of pharmaceutical sciences

Empowering the in-service pharmacy professionals by providing them continuing pharmacy education and post-graduate training programs

Aligning the pharmacy education with the international standards for representing the country at all national and international forums

Developing and delivering a unique set of training skills to enable the learners to think critically and grow as pharmacy leaders



Shifa College of Pharmaceutical Sciences

A Journey Through Time

- 2013** • Shifa College of Pharmaceutical Sciences initially came into existence as a Department of Pharmacy
- 2014** • Department of Pharmacy inspected by the Pharmacy Council of Pakistan and Granted NOC to offer 5 years Doctor of Pharmacy Program (National Qualifications Framework – NQF level 6).
- 2016** • Department of Pharmacy upgraded to Shifa College of Pharmaceutical Sciences, with departmentalization at subject specialization/domain level; followed by its recommendation and recognition by the University Academic Council, and syndicate/senate respectively.
- 2016** • College inspected by the Pharmacy Council of Pakistan for the provision of NOC for continuation of Pharm.D program on its second/interim visit.
- 2017** • Establishment of multiple dedicated and well-equipped laboratories for various subject specialization/domains under the ambit of respective departments of Basic Medical Sciences, Pharmaceutics, Pharmaceutical Chemistry and Pharmacognosy.
- 2017** • Upgradation of the College to Faculty of Pharmaceutical and Allied Health Sciences (FPAHS), now incorporating Shifa College of Pharmaceutical Sciences and other Allied Health Sciences Departments/Colleges for academic progression and advancement of multidisciplinary approach.
- 2017** • Upgradation of a dedicated Research Laboratory for Molecular Pharmacology to carryout research in the field of pharmacogenetics and population genetics.
- 2018** • Approval of Postgraduate M.Phil. program in Pharmacology (Molecular) by the Higher Education Commission of Pakistan.
- 2018** • Establishment of a dedicated laboratory for Quality Control and Drug Testing to carryout drug analysis and training of students.
- 2018** • Establishment of a dedicated Animal House with breeding and experimentation facilities; and a Botanical Garden for Natural Product Chemistry experiments.
- 2019** • Approval of Postgraduate M.Phil. program in “Clinical Pharmacy Practice” by the Higher Education Commission of Pakistan.
- 2019** • College inspected by the Pharmacy Council of Pakistan and granted “accreditation” for its programs.
- 2020** • Development and implementation of Integrated Contextual Modular Curriculum (ICMC) in line with the contemporary international pharmacy education practices.
- 2021** • Approval of Postgraduate M.Phil. program in “Pharmaceutical Chemistry” by the Higher Education Commission of Pakistan.
- 2021** • Approval of Postgraduate PhD program in “Pharmaceutical Chemistry” by the Higher Education Commission of Pakistan.
- 2021** • Approval of Postgraduate PhD program in “Pharmacology” by the Higher Education Commission of Pakistan.

Envisioned Competencies of our Graduates



Introduction of SCPS

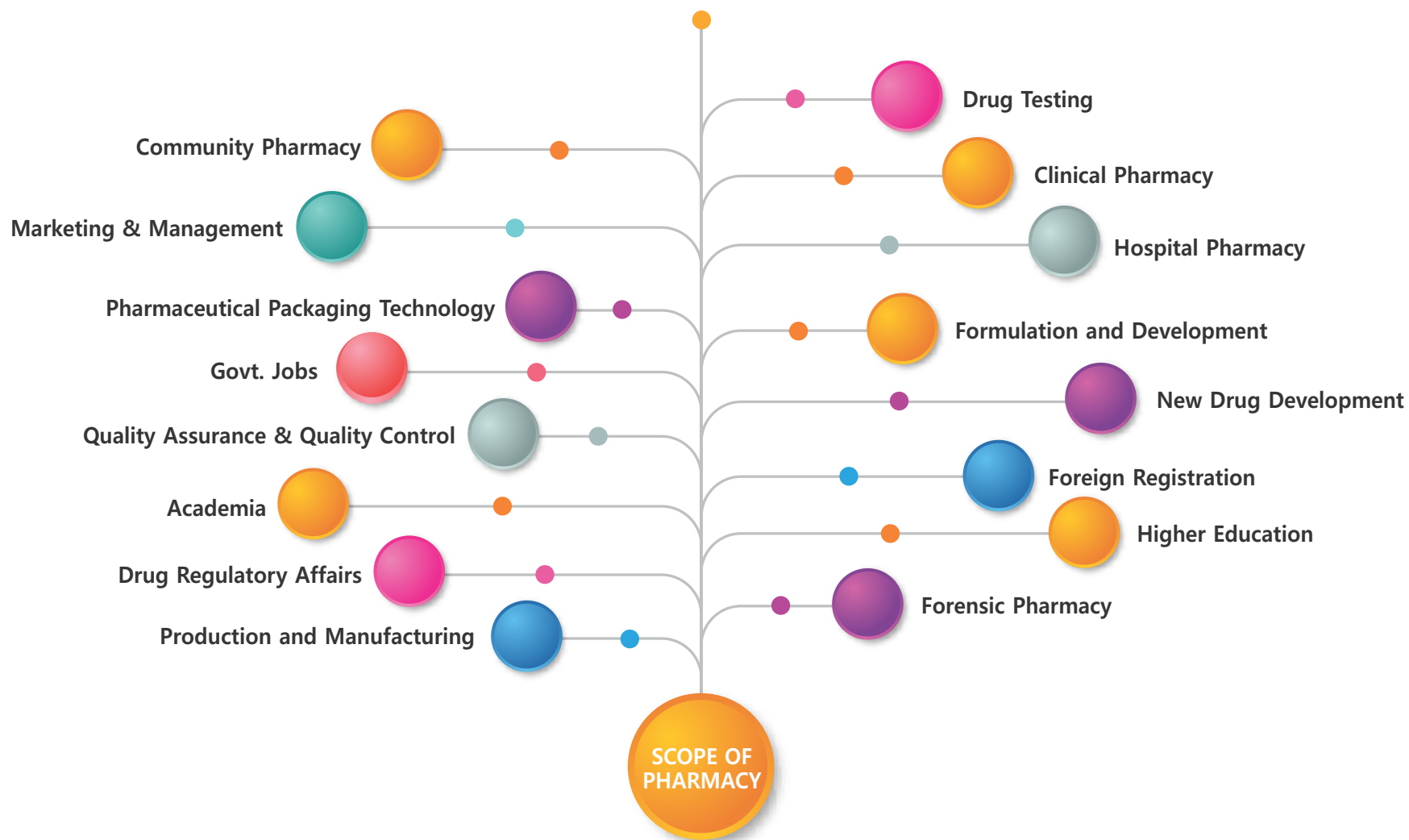
Shifa College of Pharmaceutical Sciences (SCPS) is an academic unit of the Faculty of Pharmaceutical and Allied Health Sciences (FPAHS) and a constituent college of Shifa Tameer-e-Millat University; which is an HEC recognized & Federally chartered University. SCPS, since its inception in 2014, has been expediting state-of-the-art education and training, including campus-based and facility-based laboratory and clinical education in pharmaceutical sciences. It also forms part of the affiliation of the Joint Commission International, USA accredited hospital; the Shifa International Hospitals Ltd., Islamabad. The latter is a unique distinction of being the only national pharmacy institute in Pakistan associated with an internationally accredited hospital.

Located in the heart of the national capital, SCPS is well-positioned innovative center focussed on healthcare that brings education, diagnostics, treatment, research, and commercial applications together. Pharmacy, a lifesaving profession, is an interdisciplinary field which deals with the aspects of pharmacotherapy and formulation development. The pharmacy profession has long-drawn-out significantly in terms of providing professional services and now recognized as a significant profession in the multidisciplinary approach to health care systems.

SCPS has developed the Pharm. D. curriculum with an aim to achieve international level competencies among their graduates. This makes SCPS the pioneer and only institute to offer Integrated Contextual Modular Curriculum (ICMC) in Pharmacy education. This curriculum is designed in accordance with Objective-based Curriculum Design and Competency-based Curriculum design. It is characterized by *active learning, critical thinking, integration, flexibility* and *innovation*. The curriculum content has been devised in a manner to interlink various aspects of objective learning and competencies as per the demand of the stakeholders. Though all the standards set by the traditional curriculum and scheme of studies are complied to; the revision of the Doctor of Pharmacy curriculum is executed in a manner that the SCPS graduates stand out as leaders in pharmacist-led practice-based setting in all sectors of pharmacy profession.


SCPS is also offering postgraduate programs in Pharmacology (Molecular), Clinical Pharmacy Practice and Pharmaceutical Chemistry. These programs are based on innovative research areas, which complement the international standards and market-scope.

Career Choices



Salient Features

- SCPS is a constituent College of Shifa Tameer-e-Millat University, a federally chartered, HEC recognized, General Category University.
- Accredited by the Pharmacy Council of Pakistan Vide letter F. No .2-10/2012-PCP for 5 years Doctor of Pharmacy program.
- Only Pharmacy institute in Pakistan offering Integrated Contextual Modular Curriculum developed in-line with the Pharmacy education standards of USA, UK, Malaysia and Australia.
- Unique privilege to be associated with state-of-the-art, JCI (USA) accredited Shifa International Hospitals Ltd., Islamabad for clinical training, attachments, clerkships and internships in line with the global standards.
- Highly qualified and experienced M. Phil and PhD faculty members trained at reputed national and foreign universities.
- Well-placed in the Faculty of Pharmaceutical and Allied Health Sciences (FPAHS) to integrate the role of pharmacy in the health care system along with medical, nursing and allied health sciences.
- Dedicated academic advisorship, student support and career counselling services to train well-groomed pharmacists who can serve as active members of the society.
- Well-designed, purpose-built campus, located in the heart of Islamabad, as per the requirements laid down by Pharmacy Council of Pakistan (PCP).
- Innovative Post-graduate and Doctoral training programs to bridge the gap between basic, clinical and transitional sciences.
- Only pharmacy institute offering post-graduate degree (M.Phil.) in contemporary disciplines of Pharmacology (Molecular) and Clinical Pharmacy Practice approved by Higher Education Commission vide letter NO.1-60/2018/QAD-NOC/HEC/STMU/269 and 1-60-2018-QAD-NOC/HEC/STMU/96, respectively.
- Research intensive (M.Phil.) and doctoral (Ph.D.) degree programs in the field of Pharmacology and Pharmaceutical Chemistry approved by Higher Education Commission vide letter NO.1-60/2020/FAD-NOC/HEC/STMU/160, 1-60/2020/FAD-NOC/HEC/STMU/154 and 1-60/2021/QAD-NOC/HEC/Shifa/528 respectively.
- Well stocked libraries and online/e-library access to more than 14,000 books and over a hundred journals.
- Air conditioned Lecture Halls and tutorial rooms equipped with latest audio visual aids.
- Active student societies and clubs for promoting the students' participation in co-curricular and extra-curricular activities.
- Generous financial assistance and academic merit award prizes.



Messages from the Program Team

The Doctor of Pharmacy Integrated Learning Environment (ILE) Program Team, under the Deanship of Faculty of Pharmaceutical and Allied Health Sciences, is focused on transforming our students to be practice-ready pharmacists at the time of graduation. Our meta-curricular approach has merged the internationally recognized and adapted curriculum design and development process with instructional strategies, aimed at developing active learners, and assessment techniques that aid the adequate formative and summative assessment of the learners. In addition, the co-curricular and extra-curricular activities managed through the Dean's Office, Student Affairs Office (SAO) and Office of Student Engagement and Participation (OSEP) and our specialized learner-centered Mentorship and Advisorship Program for Students (MAPS) help the learners to develop the essential competencies that can aid their long-term relevance and essentiality as a responsible healthcare professional and citizen.

Dr. Mustafeez Mujtaba Babar
Program Director (ICMC-Pharm.D.)

The fast-paced development in the field of medical and pharmaceutical sciences necessitates the training of healthcare professionals according to the international practices in clinical education. Our Integrated, Contextual, Modular Curriculum is focused on the training of individuals to be active, life-long learners, who would ultimately be able to employ these best practices for the advancement of pharmacy profession. By using a combination of techniques aimed at developing both the didactic and experiential learning of our students, we focus on teaching through interactive sessions, group discussions, hands-on practical sessions, extern/ intern/ clerkships and independent immersions, all of which help the learners in achieving the desired outcomes in an effective manner.

Dr. Madiha Ahmed
Assistant Program Director (Instructional Modalities)

The adoption of latest instructional methodologies in Pharmacy education necessitates the incorporation of Contemporary assessment and Examination modalities. A structural and well-defined assessment procedure has been developed which ensures achievement of learning outcomes across the three major domains of cognitive, Psychomotor and effective learning. Formative assessment is used for Continues and Low stakes means of assessing the learner via well-structured rubrics. It helps both the instructor and learner identify gaps in understanding; and recognize strength, weakness, and target areas that need improvement. Summative assessment is used for formal, and high stakes means of assessing the learner's periodic progress. This is achieved through SAQ, SEQ, MCQs, OSCE/OSPE and WBA systematically aligned with the learning outcomes, and according to the Miller's pyramid in each theme, thus ensuring fair and just evaluation.

Dr. Syeda Saniya Zahra
Assistant Program Director (Assessment Modalities)

Department of Basic Medical Sciences

Basic Medical Sciences have always served as the backbone of any undergraduate or graduate program in pharmaceutical sciences. The Basic Medical Sciences department offers its major contribution in various modules, that are horizontally and vertically integrated with other streams.

These modules make the foundation for understanding of the clinical teaching and training. The main objectives of the BMS are to: teach undergraduate and post-graduate students, develop a challenging Pharm.D

curriculum, design optimal methods for instructing learners and effectively utilize precious institutional resources.

Ever since its establishment, BMS has relentlessly pursued excellence in both teaching and research through delivery of well-designed curriculum and cutting-edge research in the University. The Department strongly focuses on multidisciplinary research and has successfully established collaborative research projects with the clinical departments at Shifa International Hospital.



Faculty Members

Prof. Dr. Sagheer Ahmed

Ph.D., M.Phil., B. Pharm. (R.Ph., Pak)
Professor
Academic Advisor and Head of Department

Dr. Ahmed studied Cardiovascular Pharmacology in MPhil and PhD. For his postdoctoral studies, he chose neuropharmacology which he explored for three years. Dr. Ahmed has over 20 years of teaching, research and professional experience in the field of Neuroscience & Pharmacology. Beside his research achievement (9 patents, 57 publications, 676 citations, h-index 15 1-10 index 25, e-index 21 g-index 24). Dr. Ahmed has the training and experience of facilitating problem-based learning (PBL) in both Harvard style (From Aga Khan University) and Maastricht styles (from University of Brunei Darussalam). His primary research interests include Personalized

Medicine and Pharmacogenetics and his research work in this area has led to four patents. Recently, in a list of the most productive scientists by Pakistan Council of Science & Technology, Dr. Ahmed was ranked 2nd in the field of Pharmaceutical Sciences in Pakistan. He is a member of the British Pharmacological Society, American Society for Pharmacology & Experimental Therapeutics and of International Brain Research Organization, France. He is registered as a category 'A' pharmacist with Pharmacy Council of Pakistan since 2003. He is also a reviewer of many international scientific journals.



Dr. Mustafeez Mujtaba Babar

Ph.D., M.Phil., Pharm.D. (R.Ph., Pak.)

Associate Professor

Advisor Student Affairs

Program Director (ICMC-Pharm.D.)

Dr. Babar is an interdisciplinary researcher focused on bridging the gap between basic, applied and clinical sciences. Trained as a clinical pharmacist during his Pharm. D. program, he later equipped himself with research tools of pharmacology, virology and microbiology, medicinal chemistry, plant biotechnology, materials engineering and pharmacoinformatics during his post-graduate training years at National University of Sciences and Technology (Pakistan) and Stanford University School of Medicine (USA). Owing to his diverse training and experience, his research interests incorporate all the areas of drug discovery and development process. He is certified by the Society of Infectious Diseases Pharmacists, USA in Antimicrobial Stewardship for Acute Care. Dr. Babar has been trained in curriculum design and development, instructional and assessment strategies and evaluation. He is certified in Clinical Education by The University of Edinburgh (Edinburgh, UK) and in Medical Education (Assessment) by the Association for Medical Education in Europe (Dundee, UK). He

has been involved in the designing, development, implementation and monitoring of curricula of various degree programs including Doctor of Pharmacy (conventional and Integrated Contextual Modular Curriculum), BS Biosciences (Microbiology and Biotechnology), BS Biomedical Engineering, MPhil Clinical Pharmacy Practice, MPhil Pharmacology, MS Applied Biosciences and PhD Pharmacy. Based on his contribution to the academic development of SCPS and pedagogical methods, he was awarded the best University Teacher Award from among 300 faculty members as per HEC criteria. Dr. Babar has contributed to more than 35 scientific manuscripts published in journals and books with publishers of international repute including Nature Publishing Group, Springer, Elsevier and John Wiley & Sons. He is a registered member/ affiliate of several professional bodies. He also serves as an editorial board member and examiner at many national and international functionalities.



Dr. Shafqat Rasul Chaudary

Ph.D., M.Phil., Pharm.D. (R.Ph., Pak.)

Assistant Professor

Program Coordinator M.Phil. Pharmacology (Molecular)

Dr. Chaudary got his Doctor of Pharmacy and M.Phil degree from The Islamia University of Bahawalpur. He was then awarded an HEC 90% Overseas Scholarship for doctoral studies in Germany. In 2018, he completed his PhD in Pharmacy from the University of Bonn. During his PhD, he was also admitted to the Bonn International Graduate School of Drug Sciences (BIGS DrugS) (class of 2015 - 2018) in which he investigated the role of systemic inflammation in aneurysmal subarachnoid hemorrhage (aSAH) and post-aSAH complications. His research interest is in the investigation of the role of systemic inflammation, which may have a biomarker, prognostic and therapeutic potentials. The domains of keen interest in this regard

include investigation of the role of "Damage associated molecular pattern" molecules (DAMPs), investigation of pro- and anti-inflammatory cytokines, and multicolour flow cytometric cell surface-based immunophenotyping of monocyte subsets and T helper cell subsets. He has contributed to numerous articles in international journals of good scientific repute with a cumulative impact factor of over one hundred. In 2020, he was awarded an Early Career Travel Award and Paul Dudley White International scholar award by the American Heart Association/American Stroke Association in a prestigious International Stroke Conference (ISC#2020) in Los Angeles, USA.



Dr. Faiza Naseer

M.Phil., Pharm.D. (R.Ph., Pak.)
Senior Lecturer and Ph.D. Scholar

Dr. Naseer is currently serving as a Lecturer at SCPS and as a section editor in Journal of STMU. She has nearly a decade of experience as a hospital pharmacist, clinical pharmacist and an academic pharmacist. She worked as an IPD supervisor in Maroof International Hospital, Islamabad and Chief pharmacist at Al-Shifa Trust Eye Hospital Rawalpindi. She is currently enrolled in PhD Applied Biosciences at NUST, and her research focuses on oncolytic Virus for the treatment

of Cancer. Dr. Naseer has contributed to 27 articles published in national and international journals. Her keen interests are in molecular biology lab work, software, research projects, manuscripts writing and publications.



Department of Pharmaceutical Chemistry

The Department of Pharmaceutical Chemistry offers its valuable contribution throughout the Pharm.D program by teaching various modules that help in integrating the core concept of pure and applied chemistry with reference to Biomolecules, Metabolism, Pharmacokinetics and Pharmacodynamics and Drug testing and analysis. Together these modules provide the future pharmacists a solid background in;

(a) fundamental of organic chemistry and its application in synthesis of complex drug molecules and their role in Pharmacotherapy,

- (b) tools and techniques required to analyze drug molecules during drug development, production and quality control with special reference to formulation design and development,
- (c) understanding biomolecules and their role in health and disease,
- (d) understanding the structure-activity relationship (SAR) of major classes of therapeutic agents.

With the disposal of hard-working and talented faculty in the department, its next focus is to start post-graduate program in Pharmaceutical Chemistry.



Faculty Members

Dr. Madiha Ahmed

Ph.D., M.Phil., Pharm.D. (R.Ph., Pak)

Assistant Professor

Incharge Pharmaceutical Chemistry

Assistant Program Director (Instructional Modalities)

Dr. Madiha did her Doctor of Pharmacy from the University of Karachi and M.Phil. in Biochemistry from Quaid-i-Azam University (Pak), Islamabad. She enrolled in the PhD program at QAU and carried out her research in the field of natural product Chemistry at QAU and the prestigious University of Sydney, Australia. Her current research interests are in the field of drug discovery and development with a focus on isolation and characterization of drug leads from medicinal plants and the development of their synthetic derivatives. She has published several articles in various high impact national and

international journals. She has also served as a reviewer for many journals as well. Dr. Ahmed holds an International Certificate in University Teaching from the University of Liverpool, United Kingdom. She has been involved in curriculum design and development for the past several years. She recently contributed to the development and implementation of Integrated Contextual Modular Curriculum for the Doctor of Pharmacy program which aims to prepare practice-ready pharmacists who can positively contribute to the improvement of the health of the general public.



Prof. Dr. Tausif Ahmed Rajput

Ph.D., M.Phil., B. Pharm (R.Ph., Pak.)

Professor

Dean Faculty of Pharmaceutics and Allied Health Sciences

Dr. Tausif Ahmed Rajput is a Professor of Pharmaceutical Chemistry, Principal of Shifa College of Pharmaceutical Sciences and Dean Faculty of Pharmaceutical and Allied Health Sciences. In his current position, he is leading a multi-disciplinary faculty of over 100 academic and administrative staff members and nearly 1,100 students. His deanship is primarily focused on ensuring the adherence of all academic programs to University regulations, establishment and promotion of research culture, and instituting and enhancing the interdisciplinary coordination to achieve the greater aims of SPCS and STMU. Prof. Rajput is one of the pioneers in introducing Integrated Contextual Modular Curriculum at several educational institutes. He has been involved in the development, implementation and monitoring of the ICMC at NUST and STMU in MBBS, Pharm-D and BDS programs. Under his leadership, the curriculum of PharmD was revised for the first time in 60 years to meet the international standards of the pharmacy profession.

Before his tenure at STMU, Prof. Rajput has been involved in establishing and managing pharmaceutical, research, production and education institutions. At a very young age, he co-established a pharmaceutical manufacturing unit and successfully registered 28 products for manufacturing by way of the formulation. Prof. Rajput also devotedly contributed to setting up and smooth running of high-tech genetics research laboratory; Center for Research in Experimental and Applied Medicine (CREAM) at the prestigious National University of Sciences and Technology (NUST). He has also served as the Dean, Margalla College of Pharmacy, Margalla Institute of Health Sciences, Rawalpindi. Currently, he is serving as an Advisor

on Academic and Human Resource Management Development for National Medicine Policy 2019 under the purview of Ministry of National Health Regulation and Coordination to contribute to the national cause of improvement in professional health education. Dr Rajput is also the Member of Scientific Journal Review and Recognition Committee of Higher Education Commission (HEC), Pakistan. As the Managing Editor of Journal of Shifa Tameer-e-Milat University (JSTMU), he has successfully launched and published three volumes of the journal.

In addition to his outstanding contribution to education management, Prof. Rajput kept a balance of his academic and research activities. After completing his B. Pharm. from Bahauddin Zakariya University, Multan and getting registered as a category 'A' pharmacist with the Pharmacy Council of Pakistan (PCP), he continued his higher studies and earned M. Phil in Pharmaceutical Chemistry from the same University. Being a strong supporter of the integration of interdisciplinary research, he then pursued his PhD in Biochemistry (Specialization: Pharmacogenetics and Molecular Biology) from NUST. His research and academic work have been profiled in some of the leading National and International journals and conferences. With a strong research profile and being an HEC approved PhD supervisor, he has supervised/Co-supervised 42 M.Phil., FCPS and PhD trainees. He has contributed to more than 50 original research and academic publications. He is also a member of several editorial boards, examination bodies and grant review panels.



Dr. Fawad Naeem

M.Phil., M.B.A., B.Pharm., (R.Ph., Pak.)
Senior Lecturer and Ph.D. Scholar

Dr. Fawad Naeem is serving as a Senior Lecturer in Shifa College of Pharmaceutical Sciences. He did his graduation in Pharmacy from Bahauddin Zakariya University, Multan. There are two master's degrees to his credit which include M.Phil. Pharmaceutical Chemistry and Master of Business Administration (Marketing). During his M.Phil. research, he worked on the synthesis of thiazolidinedione derivatives and the testing of their antidiabetic activity. Currently, he is performing his duties in the Department of Pharmaceutical

Chemistry. Pharmaceutical Chemistry is an integral part of Pharm-D curriculum and serves to be a backbone of the Doctor of Pharmacy program. He is involved to pursue and establish an independent and high-quality teaching program; to design and deliver a range of teaching materials and undertake student assessment activities; to engage in relevant professional and knowledge exchange activities; and to carry out the administrative tasks. He is currently enrolled in a Ph.D. in Pharmaceutical Chemistry.



Dr. Aisha Altaf

M.Phil., Pharm.D. (R.Ph. Pak.)
Senior Lecturer

Dr. Aisha worked as a research associate at Centre of Advanced Drug Research (CADR) lab at COMSATS, Abbottabad where she received hands-on training on various enzymatic assays (i.e. carbonic anhydrase & urease). She visited German universities through DAAD exchange programme and had a brief insight of research along with the historical and cultural background. Her research interests include Computational chemistry (Molecular docking & scoring), Generation

of animal models for learning & memory and enzyme assays. She established animal models for learning & memory for Alzheimer's disease during her Master's research. Currently, she is researching the inter-disciplinary field of Pharmacogenetics and computational chemistry.



Dr. Muhammad Kazim Zargaham

M.Phil., Pharm.D., (R.Ph., Pak.)
Lecturer

Dr. Zargaham is a lecturer in the Department of Pharmaceutical Chemistry. He has done his graduation in Doctor of Pharmacy from the University of Lahore and was awarded Chancellor's Gold Medal. He also received the Chancellor's Gold Medal in his M.Phil. (Pharmaceutical Chemistry) from Riphah International University, Islamabad. His research focuses on the synthesis of thiazolidine derivatives and their biological evaluation. His research interests are

in the areas of drug discovery and bioinformatics. He has contributed to two book chapters related to Plant-microbe interactions and new approaches to antimicrobial discovery. He has also contributed to two research and one review article titled "Virtual Screening of FDA-Approved Drugs against LasR", "Analysis of drug dosing adjustments in patients with chronic kidney disease" and "Potential therapeutic natural products against Alzheimer's disease".



Department of Pharmaceutics

Pharmaceutics is one of the major departments of Shifa College of Pharmaceutical Sciences. The department offers courses spread from Foundation year till the semester year of Doctor of Pharmacy Program. Pharmaceutics is about an applied science encompassing drug discovery, physical and chemical characterization, dosage form designing, formulation development, prototype and industrial manufacturing, quality control analysis and evaluation, approaches to drug delivery and disposition, while being used safely and effectively by patients. We offer a training environment that includes cutting edge laboratory instrumentation and

technologies, experienced and devoted teachers, and knowledgeable staff. We aim to promote the development of safe and high-quality products through teaching different modules integrated horizontally and vertically with other streams of the Pharm. D program. Our zealous faculty bring together expertise in physical pharmacy, dosage forms science, biopharmaceutics, bioanalysis, drug metabolism, drug transport, drug formulation, industrial manufacturing and development of novel drug delivery systems to support our educational and research missions.



Faculty Members

Dr. Atif Sarwar

M.Phil., CQP (NUST), B.Pharm. (R.Ph., Pak.)
Assistant Professor and Ph.D. Scholar
In-Charge Pharmaceutics Department
Head Exam Cell



Dr. Sarwar has been working as Assistant Professor and Incharge Department of Pharmaceutics at Shifa College of Pharmaceutical Sciences, Shifa Tamer-e-Millat University, Islamabad. He is a B.Pharm and an M.Phil (Pharmaceutics). Currently, he is awaiting his final PhD defense of thesis from UKM, Malaysia where he worked on the development of targeted drug delivery systems. He has vast experience of 19 years in pharmaceutical manufacturing and academics, with expertise in pharmaceutical technology, quality control and novel drug delivery systems. He has earned his

professional diploma certification in quality management from Pakistan Quality Certification Board (PQCB). Dr. Sarwar is serving as a member of the District Quality Control Board (DQCB) as well. He has done significant research work and published several quality international papers. He has also co-supervised many postgraduate students and is also performing the additional responsibilities as Head Exam Cell (Annex campus) and Head Examination Committee SCPS.

Dr. Faryal Jahan

M.Phil., B.Pharm. (R.Ph., Pak.)
Senior Lecturer and Ph.D. Scholar

Dr. Jahan has over 16 years of professional experience. During her long contribution as an academic pharmacist, she has taught physical pharmacy, dosage forms design, pharmacognosy and pharmaceutical technology. She has contributed to several academic and research publications. She has also developed a laboratory manual of pharmaceuticals for Pharm.D. students which has achieved nation-wide appraisal. She is currently enrolled in PhD

(Pharmaceutics) in which her project is focused on the development of nanomedicine in the form of micelles that can potentially act against ocular diseases.



Dr. Rashid Ali Khan

M.Phil., Pharm.D., (R.Ph., Pak)
Senior Lecturer and Ph.D. Scholar

Dr. Khan obtained his Doctor of Pharmacy (Pharm-D) from Riphah International University Islamabad in the year of 2013 and M.Phil. Pharmaceutics in the year 2017. He has work experience in ISO certified pharmaceutical company and has been working as Senior Lecturer at Shifa College of Pharmaceutical Sciences since 2015. His area of interest in research is dosage form design and novel drug delivery systems. He has developed an improved dosage form of

poor water-soluble Ebastine using the hydrotropic phenomenon of solubilization. He is Recently on solubility enhancement of BCS-II drug by co-crystallization.



Dr. Rabia Gul

M.Phil., Pharm.D., (R.Ph., Pak.)
Lecturer and Ph.D. Scholar

Dr. Gul did her Pharm.D. with the distinction of Gold Medal Award from Hamdard University Karachi. She also earned Merit-based Fellowship from Quaid-i-Azam University, Islamabad in M.Phil. She has working experience in the pharmaceutical industry and her areas of expertise include quality control analysis of all dosage forms and raw materials, method validation and SOPs designing. Research expertise comprises nanomedicine, formulation development, in-vitro and ex-vivo drug release studies. Her current research interests are Formulation development, nanomedicine, biocompatible

polymers, transdermal drug delivery system, sustainable development of novel formulations and anti-cancer novel dosage form. She has contributed to 6 peer-reviewed articles in international journals. Dr. Gul is pursuing her doctorate (PhD) in Pharmaceutics from COMSATS University.



Dr. Wajeeha Khalid

M.Phil., Pharm.D. (R.Ph., Pak)
Lecturer and Ph.D. Scholar

Dr. Khalid has been working as Lecturer at Shifa College of Pharmaceutical Sciences, Shifa Tameer-e-Millat University, Islamabad. Dr. Khalid did her Pharm.D and M.Phil. (Pharmaceutics) from the University of Lahore. Based on her academic performance, she was awarded the Chancellor's silver medal in Pharm.D and gold medal in her M.Phil. Dr. Khalid has over 8 years of professional experience in ISO certified pharmaceutical manufacturing and

academics. Dr. Khalid has contributed to several research publications in international journals and is focused on bridging the gap between industry and academia. Her current area of research is formulation development, nanomedicine and drug release studies. Dr. Khalid is pursuing her doctorate (PhD) in Pharmaceutics from COMSATS University.



Department of Pharmacognosy

The department of Pharmacognosy at the Shifa College of Pharmaceutical Sciences aims at development of Pharmacist capable of understanding the role of natural products in Complementary and Alternative Medicine. We are focused at teaching about the incorporation of herbal based medicine along with addressing the role of

plant biology and natural product chemistry in formulation development. The contents covered during the Pharm.D program involve study of crude drugs, extraction of natural products, major classes of plant secondary metabolites, therapeutic uses of herbs and clinical pharmacognosy.



Faculty Members

Dr. Syeda Saniya Zahra

Ph.D., M.Phil., Pharm.D., (R.Ph., Pak)

Assistant Professor

Incharge Pharmacognosy Department

Assistant Program Director (Assessment Modalities)

Dr. Zahra is serving as an Assistant Professor and Incharge Department of Pharmacognosy, Shifa Tameer-e-Millat University, Islamabad & M.Phil. in Biochemistry from Quaid-i-Azam University (Pak), Islamabad. She enrolled in the PhD program at QAU and carried out her research in the field of Pharmacognosy at QAU and

the prestigious University of California Santa Cruz (UCSC), USA. Her research interests involve natural product drug discovery and development, bioassay-guided isolation, Phytochemistry, natural product formulation and quality control of herbal products. She has contributed to several research publications and patents.



Dr. Omer Farooq

M.Phil., B.Pharm. (R.Ph., Pak.)

Senior Lecturer and Ph.D. Scholar

Dr. Farooq has practical experience in different domains of pharmacy. He has vast experience in the field of retail pharmacy, hospital pharmacy and academic pharmacy. His research interests include the in silico, in vitro and in vivo screening of phytochemicals. He completed his M.Phil. Pharmaceutical Chemistry program from

Riphah International University, Islamabad and is worked on the pharmacogenetic approaches to establish the role of prostatic derivatives in HIV latency by applying computational biology techniques. Dr. Farooq is currently pursuing PhD Pharmaceutical Chemistry from Riphah International University.



Department of Pharmacy Practice

Pharmacy Practice teaches the elements of pharmacy which focus on delivering quality person-centred healthcare. Pharmacy Practice is a dynamic and innovative department with the main objective, to provide the student with a platform of knowledge and experience, so that they are confident to support patients in their therapeutic use and to make clinical decisions for achieving definite patient outcomes.

Through our affiliation with Shifa International Hospital (SIH), we are in the unique position of providing our pharmacy undergraduates with direct exposure and experience to patients and healthcare professionals. Pharmacy undergraduates have the opportunity to

engage in educational visits as part of their learning experience at Shifa International Hospital (SIH).

The department offers integration practice modules starting from freshman year where the learner will have the opportunity to visit and experience hands-on training at various practice premises such as hospital, retail, community and clinical specialties with the emphasis on teaching and demonstrating quality pharmaceutical care. The department of Pharmacy Practice is involved in the hospital internship program extending from Sophomore year to Senior year to further enhance their experience and gain a solid insight of the role of Pharmacist in the health care system.



Faculty Members

Prof. Dr. Shazia Qasim Jamshed

PhD., MPhil., BPharm., (R.Ph., Pak.)

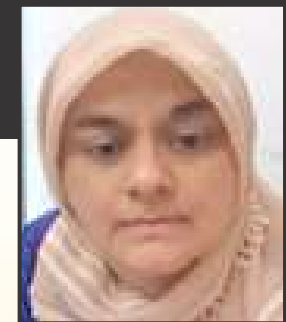
Fellow Royal Society of Public Health (FRSPH)

Professor

Head of Department Pharmacy Practice

Dr. Shazia Jamshed did her Ph.D. in Pharmacy Practice in 2011 from Universiti Sains Malaysia. Prior, she completed her Bachelors in Pharmacy and Master of Philosophy Pharmacology from the University of Karachi, Pakistan. Since 2007 onwards she is involved in teaching and guiding research students. She worked as research fellow in USM from 2008-2011 where she mentored undergraduate research students in Pharmacoepidemiology, Pharmaceutical Marketing, Evidence-Based Medicine, (EBM) Drug Utilization Review,

public health pharmacy, generic medicine substitution, and Biostatistics. She was actively involved in guiding final year students for their qualitative research work afterwards. She joined International Medical University, Malaysia as Lecturer, Pharmacy Practice. At IMU she was involved in conducting Professional Skill Development (PSD) and Objective Structured Clinical Examination (OSCE). She was the module coordinator for Clinical Pharmacy and Hospital coordinator. From 2012 to 2020 she served as Assistant



Professor International Islamic University Malaysia and coordinated OSCE followed by the initiation of Home Medication Review Program for final year students. For the last 8 years she was fulfilling the role of Clinical Preceptor in Gastrointestinal, cardiovascular, Renal and Dermatological Clerkships with final year pharmacy program. She worked as Associate Professor, Clinical Pharmacy and Practice, Universiti Sultan Zainal Abidin Malaysia and was actively involved in curriculum mapping, OBE system and coordination of Pharmacoinformatics course. She also served as Networking Coordinator, External Linkages from 2020 to 2021 and won laurels of international collaboration for the university both in terms of publications and grants. Recently she served as volunteer pharmacist Immunization Program, Malaysia in 2021.

In terms of research skills, she outclassed significantly in research arena and published more than 100 research and review papers in internationally recognized peer review journals with good impact factors. Besides her peer reviewing responsibilities, she is still associated with different international journals in the capacity of Section editor and Associate editor and Editorial Board Member like BMC Health Services Research, Nature Scientific Reports, Perspectives

in Public Health. In the paradigm of book chapter writing, she wrote 6 book chapters on topics of Social Pharmacy (Elsevier-India), Intellectual property right and access to Medicines (Palgrave MacMillan), and Pharmacy Education and Practice in Pakistan (Elsevier -USA), Medication Therapy Management. One of the chapters recently published in Encyclopedia of Clinical Pharmacy and Pharmacy Practice encompass the role of pharmacists in multiple sclerosis.

In the context of research supervision, twelve students completed their undergraduate research projects at IIUM, IMU, and University of Peradeniya, Sri Lanka. Four students completed their PhD projects while three completed masters under her supervision. Apart from grant writing and securing, she is fine-tuned to project planning and management of staff and colleagues working as collaborators from other disciplines. Her expertise in teaching, research and scholarship, her wide-ranging experience in collaborative research and her strong influencing skills makes her an excellent candidate to help SCPS achieve the aim of developing the pharmacist advocates of safe and effective use of drugs.

Dr. Waseem Ullah

PGCert. MOOC-IR, SORT-IT, M.Phil., Pharm.D. (RPh., Pak.)
Senior Lecturer and Ph.D. Scholar
Program Coordinator M.Phil - Clinical Pharmacy Practice

Dr. Waseem Ullah graduated as Doctor of Pharmacy (Pharm-D) from Gomal University and completed his M.Phil. in Pharmacology from Bahauddin Zakariya University Multan. Currently, he is in final stages of completing his PhD in Pharmacy Practice from QAU Islamabad. He holds to his credit the 'Roll of Honor Call' in all three educational institutes he has attended, along with 7 years of professional experience. During his professional career, he has served different institutes to the likes of Khyber Medical University, Government of KPK, National TB Control Program, and The Indus Hospital. He has availed different research grants during his PhD study including

University of Sydney International Student Exchange Program, HEC-International Research Support Initiative Program and UNION-Structured Operational Research and Training Initiative. He secured WHO-TDR-GLOBAL FUND certification in 'Operational' and 'Implementation Research' strategies for LMIC to combat infectious diseases. His research domains are focused on Pharmaceutical Public Health, Pharmaco-epidemiology, Pharmaceutical Health Services, Health Policy, Systems Research and Big Data Sets. Specifically, he is testing 'the contribution of different Public-Private-Mix models to Tuberculosis care and control in the Pakistani health care system'.



Dr. Shaista Hussain

PGDip. ACP, PGCert. PP, B.Pharm. (R.Ph., Pak. And U.K.)
Assistant Professor

Dr. Hussain graduated in 1996 from King's College London, University of London, with a Bachelors in Pharmacy. She later gained a Postgraduate Certificate in Pharmacy Practice from The School of Pharmacy, University of London, UK and Postgraduate Diploma in Advanced Clinical Pharmacy Practice from Queen's University, Belfast, UK. She has over 22 years of working experience in her field of Pharmacy including 19 years with the UK National Health Service, working across several hospital trusts, including the UK's largest, Barts Health NHS Trust. Dr. Shaista's experience also spans the primary care sector has developed numerous services in support of

optimizing patient-centered care, facilitating in the management of integrated care across the primary and secondary health sectors and partaking in mentorship, training and development of pharmacists, nurses and doctors. Dr. Shaista has also worked with Shifa International Hospital, building quality care systems that implemented good practices. Dr. Shaista joined Shifa College of Pharmaceutical Sciences in 2017 with a passion to impart her extensive clinical pharmacy skills and knowledge for the pharmacy students of the future.



Dr. Zirwa Asim

M.Phil., Pharm.D., (R.Ph., Pak.)
Lecturer

Dr. Asim has done her Pharm.D from Punjab University, Lahore in 2012. She pursued her M.Phil. in Pharmacy Practice from Hamdard University, Karachi in 2017 and topped in her class. She has worked in Novamed Pharmaceuticals, Lahore as Quality Control Officer and in Amson Vaccines and Pharmaceuticals as Production Officer. During the M.Phil., her research focused on the assessment of

postpartum depression and quality of life after different modes of delivery in women in Pakistan. Her future endeavours include promoting patient health through effective counselling, providing awareness to the general public regarding the irrational use of medicines and strengthening the healthcare system through effective education and training of future pharmacists.



Dr. Fatima Balquis

M.Phil., Pharm.D. (R.Ph., Pak.)
Lecturer

Dr. Balquis obtained her Doctor of Pharmacy from Gomal University, Dera Ismail Khan and M.Phil. in Pharmacy Practice from Quaid-eAzam University (QAU), Islamabad. She has working experience as a community pharmacist and as a hospital pharmacist in Khyber Teaching Hospital, Peshawar. She has been providing academic

training as a lecturer at Kamyab Institute of Medical Science (KIMS), Rawalpindi. Her current areas of interest in pharmacy practice are in enhancing the medication safety and quality of patient care in clinical pharmacy, practice of polypharmacy & Adverse Drug Reaction (ADR's) Monitoring & Reporting.



Dr. Sana Dilshad

M.Phil., PGD, Pharm.D. (R.Ph., Pak.)

Lecturer

Dr. Dilshad is a Lecturer in Pharmacy Practice department in Shifa College of Pharmaceutical Sciences. She graduated as Pharm-D from Riphah International University. Afterwards, she completed her Post Graduate Diploma in teaching (PGD) from Riphah International University. She then enrolled and completed her M.Phil. degree in Pharmacy Practice from Hamdard University. Her research areas were Prescribing trends, Knowledge, Attitude and Practice (KAP) studies towards Insulin Administration among Diabetes patients.

She has been certified in Patient Safety and Quality by IHI, USA. She supervised and co supervised multiple undergraduate research projects. The research articles based on these projects are currently under consideration for publication in well recognized international journals. Dr. Dilshad joined Shifa College of Pharmaceutical Sciences on the aim to inculcate the clinical pharmacy skills in the undergraduate students by her extensive teaching and hospital based experiences.



Dr. Saira Hina

Pharm.D. (R.Ph., Pak.)

Instructor and Interface Clinical Pharmacist

Dr. Hina did her Pharm D from Riphah International University. She received a dual scholarship throughout the program and gained the top position in most of the semesters by scoring the highest GPA. During the study, she got exposure to different fields of practice including hospital and industry. After graduation, she worked as an academic pharmacist and soon got appointed as a hospital pharmacist at Shifa International Hospitals Ltd. (SIHL), Islamabad. She did several administrative courses from Auckland, New Zealand,

including CHIPS training and CMS Training organized by District Health Board. She has also done Volunteer ship at Middlemore Hospital Auckland, New Zealand. Currently, she is working as an instructor at Shifa Tameer-e-Millat University and as an Interface Clinical Pharmacist at Shifa International Hospitals Ltd. (SIHL), Islamabad. She actively participates in providing comprehensive direct patient care in collaboration with the healthcare team.



Dr. Muhammad Hussain Abutaleb

Ph.D., M.Sc., Pharm.D. (R.Ph., KSA.)

Assistant Professor (Adjunct Faculty)

Dr. Abutaleb is a Consultant Pharmacist, and Director of Pharmacy Residency Program, King Fahad Central Hospital, Jazan. He is also serving as an Adjunct clinical assistant professor in Department of Clinical Pharmacy, Faculty of Pharmacy, Jazan University. Dr Abutaleb is currently serving as a Board Member in Scientific Pharmacy Council, Saudi Commission for Health Specialties, Riyadh, KSA. His research contributions towards the field of clinical pharmacy

includes medication errors, safe and effective use of medications, medical and nonmedical prescribing patterns, pharmacist prescribing, quality of prescribing, use of international clinical guidelines and quality of care in the field of health services management using comparative effectiveness research methods, secondary databases analysis, systematic review and meta-analysis.



Dr. Komal Fizza

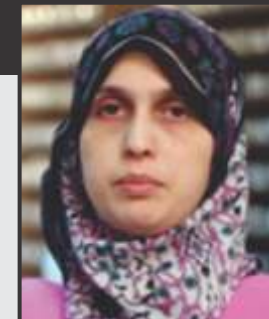
M.P.H., Pharm.D. (R.Ph., Pak.)

Clinical Pharmacy Lecturer (Adjunct Faculty)

Assistant Director Quality at Shifa International Hospitals Ltd. (SIHL), Islamabad

Dr. Fizza has been serving in various sectors of pharmacy practice in Pakistan and USA since 2009. A graduate of Riphah International University, she is currently enrolled in Masters in Public Health program. Dr Fizza's certification achievements include JCI accreditation, Pharmacy Preceptor and Antimicrobial Stewardship. She has been a scholarship holder throughout her educational career and is currently serving as an Associate Manager Pharmacy at Shifa International Hospitals, Ltd. (SIHL) Islamabad. She has served

as a member of the Hospital Quality Audit team, JCI-accreditation team, coordinator with Drug Regulatory Authority of Pakistan (DRAP) for narcotics procurement & management and other high-profile positions of responsibility. She has presented her work and carried out trainings and workshops at several national and international conferences with a focus to promote the safe and effective use of medicines.



Dr. Muhammad Azizullah Khan

M.P.H., Pharm.D. (R.Ph., Pak.)

Clinical Pharmacy Lecturer (Adjunct Faculty)

Principal Pharmacist, Shifa International Hospitals Ltd. (SIHL), Islamabad

Principal Pharmacist, Shifa International Hospitals Ltd. (SIHL), Islamabad Dr. Khan holds a Doctor of Pharmacy degree from the Hamdard University, Karachi. Based on his interest in understanding the drug manufacture and supply chain management process, he joined the Gray's Pharmaceuticals Pvt. Ltd., Islamabad where he worked as a Production Pharmacist for two years. During the same time, he enrolled in the Masters in Public Health program to develop himself as a caregiver for the general masses. On completion of his

degree, he moved to Dubai where he worked as a Hospital Pharmacist at Zulekha Hospital. With this diverse training and experience, he decided to join the Shifa International Hospitals Ltd., Islamabad to serve his motherland. Over the past 7 years, Dr. Khan has been working in different areas of pharmacy management including ambulatory care, preceptorship, medication management and stock management among others. He is actively involved in training and scholarship.



Dr. Rehan Anjum

M.S., Pharm.D. (R.Ph. Pak.)

Clinical Pharmacy Lecturer (Adjunct Faculty)

Clinical Pharmacist, Program Director SIH Pharmacy Residency Program. Shifa International Hospitals Ltd. (SIHL), Islamabad

Dr. Rehan Anjum has done my Doctor of Pharmacy (Pharm.D) from Hamdard University. He also holds the degree of Master of Science in Bio-informatics from Comsats University Islamabad. He has worked at multiple hospital settings as a clinical pharmacist and has an experience of more than 6 years. Currently he is working as critical care and kidney transplant clinical pharmacist at Shifa

International Hospital Islamabad. At hospital he is involved in training of other pharmacists and also serving as residency program director of SIH pharmacy residency program. Being the program director of SIH pharmacy residency program he is involved in designing, implementation and assuring clinical pharmacy residents and students in clinical pharmacy skills.



Dr. Muhammad Awais

Cert. Anticoagulant Therapy Management, Pharm.D., (R.Ph., Pak.)
Clinical Pharmacy Lecturer (Adjunct Faculty)
Clinical Pharmacist, Shifa International Hospitals Ltd. (SIHL), Islamabad

Dr. Awais has done his Doctor of Pharmacy (Pharm.D) from Federal Urdu university of Arts ,science and technology Karachi in 2013. He has worked as a community pharmacist and a Hospital Pharmacist at multiple hospital settings. He has an experience of more than 7 years. He has done a certification in Anticoagulation therapy management from University of Southern Indiana USA. Currently he is working as critical care clinical pharmacist at Shifa International

Hospital, Islamabad. He is also involved in Anticoagulation Clinic which provides services not only to in patients but also to discharged patients. He also participates in training and educational activities for physicians, pharmacists and nurses. He is also serving as a secretary to ASHP Residency Advisory Committee for International Pharmacy Practice Residency Program at SIH.



Dr. Bakhtawer Raza Chauhan

Pharm.D., (R.Ph. Pak.)
Clinical Pharmacy Instructor
Principal Pharmacist, Shifa International Hospitals Ltd. (SIHL), Islamabad

Dr. Chauhan graduated from Riphah International University, Islamabad in 2015. Ever since, she has worked in different areas of pharmacy practice including industrial pharmacy, retail pharmacy, clinical pharmacy and hospital pharmacy. She is currently leading

the Take-Home Pharmacy services at Shifa International Hospitals Ltd., Islamabad where she is managing the discharged patients' medication counseling, reconciliation and MTM. She is also serving at a preceptor for the Clinical Pharmacy Residency program.



Dr. Muhammad Gulzaib

Pharm.D. (R.Ph., Pak.)
Clinical Pharmacy Lecturer (Adjunct Faculty)
Pediatric Clinical Pharmacist, Shifa International Hospitals Ltd. (SIHL), Islamabad

Dr. Gulzaib has done his Doctor of Pharmacy (Pharm.D) from university of Sindh, Jamshoro. He has worked at multiple hospital settings as a clinical pharmacist and has an experience of more than 5 years. Currently he is working as Pediatric clinical pharmacist at

Shifa International Hospital, Islamabad. At hospital he is involved in training of other pharmacists and also serving as residency program Preceptor.



Dr. Zeeshan Khattak

Pharm.D. (R.Ph., Pak.)

Clinical Pharmacy Instructor (Adjunct Faculty)

Clinical Pharmacist at Shifa International Hospitals Ltd. (SIHL), Islamabad

Dr. Khattak has graduated from Kohat University of Science & Technology, Kohat in 2017. Ever since, he has worked in different areas of pharmacy practice including hospital Pharmacy and clinical pharmacy. He is currently working as clinical pharmacist at Shifa

International Hospitals Ltd (SIHL), Islamabad where he is managing drug information and therapeutic drug monitoring



Department of Allied Sciences & Technology

The Department of Allied Sciences and Technology focuses on strengthening the ideology of SCPS of producing well rounded pharmacists, equipped with skills to excel in their professional lives along with being able to contribute to the society. The department is involved in imparting preliminary research skills, enhancing language skills and character building of the learners. The aim of the department is to provide students with an integrated education that will give them a wide breadth of knowledge and perspective about the history, current affairs, and prepare them for the practical world through professional and behavioral grooming. It is the aspiration of the faculty to improve the capacity of learners to explore the technological aspects widely and deeply, think creatively and critically, and express ideas clearly and effectively. The realization of full intellectual and personal potential of the learners will enable them to contribute to the world around them through inspirational leadership and transformative community participation.

Faculty Members

Mr. Khurshid Ali

M.Phil. (English Literature), M.A., B.Ed.

Senior Lecturer

In-charge Allied Sciences and Technology department

Mr. Khursheed Ali holds M.Phil. In English Language & Literature from Hazara University, Mansehra. He carried out his research in the field of Post-Colonial studies title "Response of Pakistani immigrant novelists to the theory of clash of civilizations with post 9/11 scenario". His research interests include Postcolonial theory & writings; Postmodernity and the related narrative techniques, especially in colonial and post-colonial; South Asian & South American Literature;

Teaching English as Second Language; Psychoanalysis; and Social Psychology. He has over ten years of teaching experience and has worked on various research papers dealing with social, cultural, and language issues. He is the active participant of national and international research conferences dealing with identity and language issue. Mr. Ali is actively contributing to the promotion of academic and research activities in his field.



Hafiz Muhammad Javed

LLM Shariah, LLB Shariah

Lecturer

Advocate Islamabad Bar Association

Hafiz Javed is a graduate of law from the International Islamic University, Islamabad and is currently pursuing LLM Shariah from the same University. He has been involved in the teaching, training and

religious counselling sessions of the students since the inception of Shifa College of Pharmaceutical Sciences.



Ms. Mehreen Fatima

M.Phil. (Pure Mathematics), M.Sc., B.Sc.
Lecturer

Ms. Fatima has done her graduation in Mathematics and Statistics from The University of Punjab, Lahore and M.Sc. and M.Phil. from Quaid-e-Azam University, Islamabad. She has been teaching

calculus, algebra, group theory and bio-statistics for the past 9 years. She aims to pursue a PhD in Mathematical modelling and biogenetics.



Mr. Muhammad Umar Aftab

MS, BS (CS)
Lecturer (Adjunct Faculty)
Information Systems Analyst (STMU)

Mr. Umar Aftab has done Masters in Computer Networks, MS (inter networking) from University of Technology Sydney, Australia and graduation in Computer Science BS (CS) from COMSATS University, Islamabad. He also holds multiple certifications in Computer network designing, Network security and software application deployment and development.

He has over 12 years of vast experience in all facets of Information Technology field such as Installing, managing and maintaining various IT operations related to computer hardware, software, security and infrastructure development. He has served in many

national and international organizations in corporate and education on some key IT posts. He has been involved in designing and implementing complete IT infrastructure; from deploying physical network to development of complete information system. As he managed and supervised IT teams to develop Information Systems and IT infrastructures, he has got complete insight and working knowledge of Information Technology while working with multinational companies in Pakistan, Australia and United Arab Emirates. He is also involved in training and teaching of working professional and students to develop their IT skills and capacity building.



Inter-Departmental Faculty

For the effective instruction, assessment and management of Integrated Contextual Modular Curriculum (ICMC), separate faculty has been dedicated that has been trained with contemporary pedagogical methodologies. With the expertise and experience in diverse fields of pharmacy and pharmaceutical sciences, these dedicated faculty members train the students through Small Group Discussions, Case Based Learning, Problem Based Learning, Skill based Learning, Practical sessions, simulations, role play techniques and other instructional strategies. Being directly trained by the office of the Dean FPAHS, they form an essential and effective component of SCPS work force.

Faculty Members

Dr. Muhammad Asif Chaudhary

Ph.D. (EPM), M.Phil. (EPM), M.A. (EPM), M.Sc. (Economics)
Assistant Professor (Adjunct Faculty)

Dr. Chaudhary did his MSc Economics from the Punjab University, MA, Educational Planning and Management, M. Phil Educational Planning, Management and PhD in Educational Planning and Management (EPM) from AIOU, Islamabad. He did his PhD dissertation on the title "Job stress of academia and its effect on their performance in public sector universities of Punjab". He has more than 27 research publications in national and international research journals. He is also working as a reviewer with many of the national and international Journals. He has supervised 8 M. Phil students and currently supervising 5 M.Phil and two PhD students. He has more than 15 years of teaching, research and administrative experience in

the higher educational institutions. His expertise includes but are not limited to top-tier program development, excellent managerial and project-management, cross-cultural institutional development, Policymaking, institutional capacity building, curriculum development, and generation of external resources for the institution. He developed many research and development projects, which were approved by national and international donor agencies. He has expertise in the development of PC-I, PC-II, PC-III, PC-IV, and PC-V. He is committed to the development of infrastructure and resources of his institution thorough external collaboration and funding.



Dr. Farhat Shaheen

Pharm.D. (R.Ph., Pak.)
Instructor and M.Phil. Scholar

Dr. Shaheen has done her Doctor of Pharmacy from Gomal University, Dera Ismail Khan and got 2nd position in the program. Before moving to academics, she has working experience as an industrial and hospital pharmacist. Over the past 6 years of

professional life, she has been associated with Glitz Pharma, Valor Pharmacy, Global Pharmaceuticals and Shifa International Hospitals Ltd. (SIHL), Islamabad. Currently, she is pursuing her M.Phil. in Pharmaceutical Chemistry from Riphah International University.



Dr. Tanya Waseem

Pharm.D. (R.Ph., Pak.)
Instructor and M.Phil. Scholar

Dr. Waseem is a graduate of Margalla Institute of Health Sciences with a Doctor of Pharmacy degree from University of Sargodha, Sargodha. She has been a gold-medalist throughout her professional academic career. She is currently enrolled in M.Phil. (Pharmaceutical Chemistry) at Quaid-i-Azam University, Islamabad.

She has been involved in multiple research projects after graduation and has published her work at both national and international level. Her current area of research interest is Drug discovery through translational research.



Dr. Syed Damin Abbas Hamdani

Pharm.D. (R.Ph., Pak.)
Instructor and M.Phil. Scholar

Dr. Hamdani graduated as a Doctor of Pharmacy from Hamdard University, Karachi. He has worked as a hospital pharmacist at Ali Medical Center, Islamabad, before moving to the academics. He is currently working in the field of microbiology, infectious disease and

drug development. His research interests are in the field of phage therapy, health system research, nanotechnology and clinical pharmacy of infectious disease. At a young age, he has contributed to 5 international publications.



Dr. Usman Shareef

Pharm.D. (R.Ph., Pak.)
Instructor

Dr. Usman Shareef has done his Pharm.D from Riphah International University, Islamabad and was awarded Zulfiqar Gold Medal. During his study tenure, he was involved in many research projects including Computer Aided Drug Design, Survey based evaluation and antimicrobial evaluation. After his graduation he pursued his career in academics and did his internship at Riphah International University, Islamabad. This was soon translated to a junior lecturer

appointment at the same institution. After gaining some experience, he moved to Shifa Tameer-e-Millat University, Islamabad. Currently, he is doing a job as an Instructor at Shifa Tameer-e-Millat University (SCPS), Islamabad. He is currently involved in research project regarding "Synthesis and Characterization of Metal Nano-particles by Green Synthesis method".



Dr. Sana Zafar

Pharm. D. (R.Ph., Pak.)
Instructor

Dr. Sana Zafar completed her Pharm D from Margalla Institute of Health and Sciences. She has been trained as a hospital pharmacist in Begum Akhtar Memorial Hospital, Rawalpindi. Her research interest is in the area of clinical pharmacy focused on hypertension and diabetes.



Dr. Sundus Butt

Pharm. D. (R.Ph., Pak.)
Instructor

Dr. Sundus graduated in 2018 from Shifa College of Pharmaceutical Sciences, STMU in the pioneer batch. She is the gold medalist of the Class of 2018. She initially gained experience as a Hospital Pharmacist while working at Shifa International Hospital Ltd., and Ali Medical Center, Islamabad. At Pakistan Institute of Medical Sciences, Islamabad, where she worked as a Clinical Pharmacist in the Infection Disease ward while shadowing an ID consultant. She is interested in pursuing her career as an academic pharmacist while incorporating various aspects of clinical pharmacy in her teaching.



★ SCPS ALUMNI

Dr. Ahmed Hussain Bhutta

Pharm.D. (R. Ph., Pak.)
Instructor

Dr. Bhutta has graduated as Doctor of Pharmacy from Riphah International University Islamabad. He has worked as QA Inspector in Pharmaceutical Industry before his transition to academia as Instructor at Shifa College of Pharmaceutical Sciences, Islamabad. He has received many performance awards and scholarships for his outstanding curricular and extra curricular activities during his studies. He has keen research interest in nanomedicine specially theranostics.



Dr. Zeeshan Naseer Abbasi

Pharm.D. (R.Ph., Pak.)
Instructor

Dr. Abbasi is a graduate of Hamdard University, Karachi. He is trained as a public speaker and has been active in co-and extra-curricular activities throughout his academic career. He has many outstanding achievement debate and speech competition. Dr. Abbasi aims to

indicate the value and skills necessary for the personal and professional development of students through his teaching and interaction.



Dr. Saba Noureen

Pharm.D. (R.Ph., Pak.)
Instructor

Dr. Noureen has completed her Pharm.D. with distinction from Shifa Tameer-e-Millat University, Islamabad. She was awarded scholarship for achieving highest GPA throughout the program. During her studies, she was actively involved in carrying out research in the field

of pharmaceuticals, clinical pharmacy and microbiology. She has been trained in hospital and clinical pharmacy at Shifa International Hospital Ltd (SIHL). She plans to pursue a graduate degree in clinical Pharmacy.



★ SCPS ALUMNI

Dr. Farhan Shahid

Pharm.D. (R.Ph., Pak.)
Instructor

Dr. Shahid is a graduate of Shifa Tameer-e-Millat University Islamabad. He was awarded merit scholarship for his extraordinary academic performance. Dr. Shahid has research experience in field of Pharmacogenetics, molecular biology, microbiology and

bioinformatics. He has presented his research work at various national conferences. At such a young age, Dr. Shahid is the author of one published article in a peer reviewed journal and a book chapter.



★ SCPS ALUMNI

Dr. Ain Ali Haider

Pharm.D. (R. Ph., Pak.)
Instructor

Dr. Haider received his Doctor of Pharmacy degree from Gomal University, D.I.Khan. He topped his batch and got the Chancellor's Gold Medal. With training in the field of clinical and hospital pharmacy at INRUM Cancer Hospital, Peshawar and Children Hospital, Lahore, Dr. Haider is well-positioned to train the students in the diverse fields of pharmacy practice. Apart from the academic side, he is an all-rounder in extra-curricular activities. He is a talented

painter and has won many accolades and distinctions in national and international painting competitions.



Dr. Tooba Khalid

Pharm.D., M.Phil. (R. Ph., Pak.)
Research Assistant

Dr. Khalid completed her Pharm.D. degree from Riphah Institute of Pharmaceutical Sciences (RIPS), Islamabad and worked as Quality Assurance (QA) Officer for some time in Gulf Pharmaceuticals. Then, she went onto attain her M.Phil. Degree in Biochemistry from Quaid-e-Azam University (QAU), Islamabad. She has been a Scholarship holder throughout her educational career. She has the research expertise in isolation and purification of bioactive compounds from

medicinal plants and can proficiently conduct various in vitro and in vivo bioassays used for screening and analysis of medicinal plant samples or chemical compounds.



Mr. Abdullah

BS Medical Lab Technology
Research Assistant

Mr. Abdullah holds a Bachelors of Science in Medical Lab Technology (BS-MLT) degree from the University of Haripur, KPK. He has more than 3 years of working experience in various lab. His skill set includes biochemistry, molecular biology and microbiology

techniques. He is currently working on the development of means to address antimicrobial resistance. He has been actively involved in attending and arranging various scientific seminars and conferences.



Premises and Infrastructure Facilities

Shifa College of Pharmaceutical Sciences has a campus spread over 18 kanals in the sector H-8/4, heart of Islamabad. The campus houses the building (lecture halls, tutorial rooms, laboratories, faculty offices and library), student cafeteria, lawns and hard courts for sports activities. The campus has been planned in a manner to ensure the on-campus availability of all the curricular, co-curricular and extra-curricular facilities.

Lecture Halls

SCPS has five spacious lecture halls that can accommodate around 80 to 100 students at a time. Located in the basement of the SCPS building, the lecture halls have been designed in a manner that ensures the maximum interaction of the students with the teachers. The halls are well-equipped with audiovisual aids in order to facilitate the instructors to combine their oral presentations with high-resolution imagery.

Libraries

The students have access to 3 well-stocked libraries. The on-campus library has more than 2100 books on subjects related to pharmaceutical sciences. The digital library has around 3.5 million books aimed to ease of access and lowering expenses for the students. A central library stocked with 11,388 books is available in the STMU central building. SCPS also has access to multiple online journals and magazines to provide the students an opportunity to gain latest information in their area of interest. All the books and journals are original manuscripts of highest printed quality available. The collection consists of titles related to pharmaceutical sciences, medical sciences,

humanities, social sciences and allied health sciences.

Information Systems (IS)

The campus has a spacious, well-furnished and air-conditioned computer laboratory equipped with latest personal computer having high speed internet facility. There is an active Campus Management System and Learning Management System to facilitate the students, parents and faculty members to provide digitalized access to academic, attendance and financial records. Future plans of the Information Systems include the provision of trans-campus internet facility to the students. In collaboration with HEC, the IS department plans to provide full access to Microsoft genuine softwares.



Laboratories

A total of 11 laboratories have been established to provide the pharmacy students an opportunity to gain hands-on experience and technical training. The labs are well-equipped with the latest, state-of-the-art equipment and is continually updated to parallel the international progress in the field of pharmaceutical sciences. The labs include:

01. Pharmaceutics Lab-1 (Physical Pharmacy, Dosage form designs, Dispensing and Biopharmaceutics)
02. Pharmaceutics Lab-2 (Industrial Pharmacy and Pharm-Technology)
03. Pharmaceutics Lab-3 (Instrumentation and Quality Control)
04. Pharma-Chemistry Lab-1 (Organic and Medicinal chemistry)
05. Pharma-Chemistry Lab-2 (Biochemistry)
06. Pharmacognosy Lab
07. BMS Lab-1 (Physiology, Anatomy and Pharmacology)
08. BMS Lab-2 (Microbiology, Immunology and Pathology)
09. IT/Digital Resource Lab
10. Research Lab (Pharmacology-Molecular)
11. Animal House



Hostel and Transport Facility

The University offers recommendation of separate hostels for female students with supportive wardens and management team. Seats are available in girls hostel at first come first serve basis. Security is available round the clock. Transport is available to the female students to and from the hostel. Dedicated buses are also available for transport between the campuses, hospitals and for excursion trips.

Student Centre and Cafeteria

A dedicated student centre has been set-up that houses the Student Affairs Office, Admission Office and departmental secretariat. The centre is easy to access by the students and all the issues related to the students are addressed by the Student Centre. An on-campus cafeteria offers a rich variety of fresh and nutritious food. Photocopy and printing facilities are also available for the students within the campus.

Affiliated Hospitals and Community Pharmacies

The Shifa College of Pharmaceutical Sciences (SCPS) was established with an aim to provide the Doctor of Pharmacy students an exposure to the world class facilities in all subjects of Pharmacy Practice. After providing a solid theoretical basis of pharmaceutical sciences, they are trained at internationally renowned community pharmacy, hospital pharmacy and clinical pharmacy setups. The students of Doctor of Pharmacy would be provided training facilities at:

Shifa International Hospitals Ltd. (SIHL), Islamabad



The students of Shifa College of Pharmaceutical Sciences (SCPS) would be trained at the Joint Commission International (USA) accredited Shifa International Hospitals (SIH), Islamabad in the fields of clinical pharmacy, hospital pharmacy and retail pharmacy. SIH is a world class, tertiary care teaching hospital. This 646 bed hospital is located in the heart of Islamabad and is renowned for a number of specialized services. There are 17 medical and 11

surgical specialties at SIH. A team of around 50 hospital and clinical pharmacists work alongside 221 consultants in various disciplines. Moreover, 249 PG medical trainees are currently enrolled for training at SIH. SCPS in collaboration with the pharmacists and physicians at SIH has devised a comprehensive training program for pharmacy students to provide them unique opportunities at par with the international professional standards.

In addition to the clinical pharmacy, the students of SCPS would be trained with the skills of hospital and retail pharmacy (along with in situ compounding and dispensing skills) at SIH. The pharmacy department at SIH aims at the provision of "original quality medicine". The mission statement is "to provide cost effective, compassionate and quality pharmaceutical care to all patients with optimum support in all clinical areas with complete guidance and counseling". SCPS aims to indulge its students in these quality services, so that they can emerge as pharmacists with a comprehensive exposure to all fields of pharmacy.

Shifa Foundation Community Health Center (SFCHC)

SFCHC provides free treatment, advice and medicine to 500+ deserving patients daily. Those who need inpatient treatment are given the same facilities as paying patients in Shifa International Hospitals. Presently, 35 specialties and subspecialties are being offered including open heart surgeries, kidney transplant and neurosurgeries either absolutely free of cost or at extremely subsidized rates. The pharmacy students of SCPS are also trained at the clinic for inculcating the clinical pharmacy skills as a member of a physician-pharmacist-nurse trio.

Shifa Pharmacies

Shifa Pharmacies provide quality drugs and advice to the general public. These model pharmacies are managed by experienced pharmacists and provide the services of compounding, dispensing, counselling and public health awareness. The students of Shifa College of Pharmaceutical Sciences would be trained at these pharmacy setups during their degree programs. These pharmacies are located in various cities and, hence, the students can carry out summer internships and pre-registration community pharmacy training at these set-ups (near to their home districts).



Salwa Ahsan

MBA (Health & Hospital Management),
Pharm. D. (R.Ph., Pak.)

Chief of Pharmacy,
eShifa Home Care Services (SIH-T)
Shifa International Hospitals Ltd.,
Islamabad

Pharmacy is truly a remarkable, multifaceted profession that touches every aspect of health and life of people. From manufacturing to the medication dispensing, from prescription review to training and educating pharmacy students, from regulatory role to drug law enforcement, from patient education to post marketing surveillance... everything converges at one point and i.e. "professional pharmacist". Being a pharmacist is a great responsibility and accountability in every field where we work because the life and health of people depends on us.

In Shifa International Hospitals Ltd. we are committed to providing high quality, compassionate care for all and offer state of the art hospital and clinical pharmacy services. Our setup includes Inpatient, Ambulatory Care and Emergency pharmacy setup, IV admixture, TPN, sterile & non-sterile compounding services and Chemo admixture. Other hallmarks include Patient Education, Medication Reconciliation, Drug & Poison Information Service, Clinical

pharmacy coverage in key areas like critical care, oncology, transplant etc., Adverse Drug Reaction (ADR) tracking and monitoring program, Pharmacy 1 year Residency program and several clinical indicators to optimize patient drug therapy.

Shifa is in unique position that its Pharm.D students undergo a structured training program and periodic rotations in clinical and hospital pharmacy (including above mentioned areas), supervised by qualified and competent senior pharmacists in each section. This not only gives students a great learning experience in actual field, but also enables them to take on the challenges of this profession while being better equipped right from the beginning. I am confident that In Sha Allah students produced by our University (STMU) will be at par with any best pharmacy school graduates.

Industry-Academia Liaison

MOU's with Industry and Community Pharmacy

At STMU, we are dedicated to providing students an exposure to all the sectors of pharmacy. Apart from the contemporary clinical training in line with international standards, the students are given opportunities to be trained and intern at well known Pharmaceutical Industries and reputable community Pharmacies. STMU is next-generation university that believes in the art of practice based learning and we have, therefore, entered into MOUs with more than 15 national and multinational pharmaceutical Industries and community pharmacies.

The learner would recognize the vital role that community pharmacies play in improving the health, patient choice, health literacy, supply and dispensing of medicines. Based on these memoranda, arrangements are made for Pharmaceutical industry and community pharmacy visits and apprenticeship placement at these reputed organizations.



MOU's with Universities and Research Centers

STMU established partnerships and collaborations with outstanding academic and research institutions in Pakistan and abroad. The main purpose is to expand the experience of the students, promote student growth and strengthen the impact of the research. The faculty, which is at the forefront of international collaborations, helps in formalizing the agreements to ensure that the research and academic needs of the faculty and students is met. The main focus of these collaborations is to promote the inter-disciplinary nature of research in pharmaceutical sciences.



Research Facilities

A major focus of STMU is to carry out leading basic and applied research in the field of pharmaceutical sciences. In order to support the development of research culture, every year a dedicated amount is spent on provision of resources, facilities and trainings to the faculty and students. Under the direct coordination of the Dean of Faculty of Pharmaceutical and Allied Health Sciences, the equipment and facilities are made available to not only the faculty members of STMU but also to our students. Collaborative research with other institutes and organizations is strongly promoted. A number of faculty members are serving as co-advisors and members of research evaluation teams at other universities.

External Internships Program (EIP)

The students from other educational institutes are provided hands-on, supervised training on the equipment available in the SCPS laboratories according to the demands of their parent institute under the mentorship of senior faculty members. Every year tens of students attend the EIP to carry out their Final Year Projects and gain technical expertise in line with the international standards.

Research Electives Program (REP)

The REP is an innovative program that provides the students and researchers, from STMU and other institutes, to get involved in a specific

research project. The 10 to 16 weeks elective program aims to develop the technical and scholastic expertise. Along with the laboratory skills, the participants are taught about the basics of the research methodology, scientific writing and critical analysis of scientific material.



Post Graduate (PG) Programs

Contemporary programs in the field of pharmaceutical and biomedical sciences have been developed and approved from the respective regulatory bodies in order to promote the introduction of international pace in national scientific and practice setting. The currently approved PG programs include M.Phil. Pharmacology (Molecular) and M.Phil. Clinical Pharmacy Practice. Future plans include the development of M.Phil. and Ph.D. programs in Pharmaceutics (Pharmaceutical Technology) and Pharmacognosy (Natural product Chemistry/ Phytochemistry).

Research Award policy

A policy incorporating reward strategy for research and scholarly activities has been approved and implemented to promote the research culture at SCPS. Generous awards are given to the students, scholars and faculty members if they contribute to research grants and scientific manuscripts.



CURRENT RESEARCH AREAS

- Pharmacogenomics
- Pharmaco-informatics
- Pharmacotherapy
- Pharmacovigilance
- Pharmacoepidemiology
- Public Health Pharmacy
- Antimicrobial resistance
- Virology
- Computational Biology
- Synthetic Chemistry
- Medicinal Chemistry
- Phytochemistry
- Biomaterials science
- Pharmaceutical Regulatory Affairs

Student Affairs Office

Overview

Student Affairs Office at SCPS is a friendly place to start for questions you may have, about any curricular and/or extra-curricular activity / issue. The Office serves as a liaison between students, faculty and administration. The core function of Student Affairs Office is to be of assistance to students in any way possible, for which the student affairs staff shall help you succeed in your academic pursuits. It leads, directs, and administers overall functions of student counseling, student societies and discipline. The important function of Student Affairs Office is to enhance the quality of student life both in and outside of the classroom.

Overseen by Dean of Faculty / Director Campus, this office is a central place for students where they can express and get help about any problem they encounter on campus whether it is academic, personal or emotional.

The Student Affairs Office has a designated Advisor Student Affairs,

who is readily available to students for sorting out problems. The students are encouraged to consult him for counseling and guidance. Efforts are made to ensure a student life, free from worries and distractions, to help them learn to manage affairs on their own, to cope with strains and stresses which are part of the growth processes, and to focus on their prime responsibility. The Student Affairs Office functions as a friend and guide of a student; it administers his/ her needs from the time s/he steps in the College for admission, till his/ her gradation.

The Student Affairs Office provides proactive support and capacity building services to promote co- curricular activities in the College which could enrich our graduates at every stage of their life as well as building strong relationships with their peers, faculty, administration and other stakeholders.

Responsibilities

The Student Affairs Office is responsible for performing the following functions:

- Student Counseling
- Receiving of Student applications on academic as well as non-academic issues
- Provision of Certificates
- Liaison with the parents / guardians
- Facilitation in clearance, transcript and degree issuance.
- Student Fee and installment issues
- Examination eligibility and related affairs
- Student Refunds.
- Registration of students with the Pharmacy Council of Pakistan (PCP)
- Addressing complaints of the students
- Information/Query center for students and parents/guardians.
- Scholarships
- Transfer of credits.
- Maintenance of students complete academic record.
- Financial concessions (siblings, death of the bread earner etc.)

Message from

Advisor Student Affairs



Dr. Mustafeez Mujtaba Babar

Ph.D., M.Phil., Pharm.D. (R.Ph., Pak.)

Associate Professor

Advisor Student Affairs

Program Director (ICMC-Pharm.D.)

On behalf of the Student Affairs Office staff, I would like to welcome you all to the Shifa College of Pharmaceutical Sciences. We are greatly pleased to have you join our SCPS family. By joining the institute, you shall become a part of one of the most sophisticated and well-established health care setups of the country. You shall embark on a path full of hope. During your time with us, the Student Affairs Office staff would help you take full advantage of the opportunities and challenges that would rise during your stay at this higher seat of learning.

We are dedicated to meet the needs of each and every student. Here at SCPS, we have an outstanding faculty, a welcoming staff, a beautiful and well equipped campus and an atmosphere conducive for achieving

your academic goals. We would encourage you to join one of our 10 registered student and professional societies under the office of Student Engagement and Participation, that offer you an opportunity to network, strengthen your leadership skills and to contribute to personal growth and community service. We pride ourselves in providing a caring atmosphere to the students and their families, faculty, staff and alumni. We are committed to respect empathize and take pride in all we do.

We would like you to know that we care about you as an individual and want you to be a successful person and professional. We would try our level best to accommodate your requests and help make your time at SCPS a cherished memory.

○ Maimoona Shah Zaman	Senior Coordinator
○ Muhammad Farhan	Coordinator
○ Muneeba Nadeem	Program Secretary
○ Muneeba Zafar	Program Secretary
○ Mahwish Amjad	Program Secretary

IMPORTANT LINKS

WEBSITE: <https://stmu.edu.pk>

STUDENT AFFAIRS PORTAL: sites.google.com/stmu.edu.pk/fpahs-sao

LEARNING MANAGEMENT SYSTEM: <http://lms.stmu.edu.pk>

Office of Student Engagement and Participation

The students of SCPS are encouraged to join student societies in order to get maximum benefit from university life. The societies were established in order to promote co-curricular and extra-curricular activities in the university, thereby enabling the Shifaites as well-rounded graduates who can be active and responsible members of the society. Being an integral part of the Student Affairs Office, the student societies are headed by the Proctor Societies who is responsible for the administrative and managerial aspects of these student bodies.

Shifa Adventure Society – arranges educational and excursion trips to various locations in Pakistan with an aim to promote the cross-cultural interaction.

Shifa Volunteers' Society – has been established to promote a sense of civic responsibility and community service among the students.

Shifa Science and Research Society – organizes seminars, workshops and training sessions to promote the involvement of students and faculty members in research and development.

Shifa Sports Society – in combination with other sports societies of STMU organizes sports events to promote the involvement of students in healthy activities and develop sportsmanship in them.

Shifa Horticulture Society (Shifa Environmental Society) – aims at promoting the involvement of students in activities related to the promotion of planting and use of medicinal plants. The society is also involved in plantation drives to lessen the impact of climate change on the local and global environment.

Shifa Arts and Culture Society – organizes events on occasions of regional, national and international importance in order to promote the love for cultural and human heritage.

Shifa Literary Society – is involved in organizing events for the linguistics and literature lovers. It is also involved in the publication of intra-departmental journals and newsletters.

SCPS Character Building Society – in line with the recommendations of Higher Education Commission, Pakistan is involved in organizing events to educate the students in light with the religious and cultural norms and plays an important role towards personality building and grooming of the students.





Doctor of Pharmacy (Pharm. D.) 5 years program

Degree in brief

NQF Level:	6 (Undergraduate)
Nos of years:	5
No. of blocks:	18
No. of Modules:	66
Min. duration:	5 Years
Max. allowable duration:	8 Years
Laboratory Training:	Yes
Clinical training:	Yes
Research / Senior year project:	Yes
Community Service:	Yes

Doctor of Pharmacy Program

Pharmacy is a science-based health profession concerned with medicines and their use in the treatment and prevention of disease. The aim of pharmacy education at SCPS (STMU) is to educate and train healthcare professionals who have the knowledge and expertise to fulfill their roles both in the health care and beyond. Pharm.D is the first program being offered which will help to fulfill the urgent demand for more graduate trained pharmacists across the country, taking into consideration the growth and development of pharmaceuticals during the last few years particularly in the twin cities of Rawalpindi and Islamabad.

Shifa College of Pharmaceutical Sciences is the pioneer and only institute in Pakistan to offer Integrated Contextual Modular Curriculum (ICMC) in Pharmacy education.

Pharmacy is a practice-based health profession concerned with medicines and their use in the treatment and prevention of disease. SCPS (STMU) aims to educate and train pharmacists to obtain the knowledge and expertise to fulfil their role in health care. In order to practically achieve this aim, SCPS took an initiative to revise the current curriculum in line with the U.S.A. educational guidelines to train pharmacists who can be an important component of the healthcare and biomedical systems. This curriculum has been designed in accordance with the aims and objectives of the Pharmacy Council of Pakistan and the Higher Education Commission, Pakistan to cater for objective based/ outcome based - HEC new guidelines for both the national requirements and emerging needs.

The curriculum model is packaged into the **Foundation year** and

Senior year. Foundation year focuses on the basic concepts; further operationalized and reinforced in the practice years. Conversely, the practice years include three main streams: **Pharmacotherapy, Formulation Development and Nation building.** Nation building which incorporates various aspects of behavioural and social sciences, was added. Towards the end of the degree program, a period has been provided in which the learners would be **immersed in independent practice setting.** Evidently, this model would ensure that the SCPS pharmacy graduates are adequately capacitated to identify, critically analyze, design and develop solutions in their professional fields.

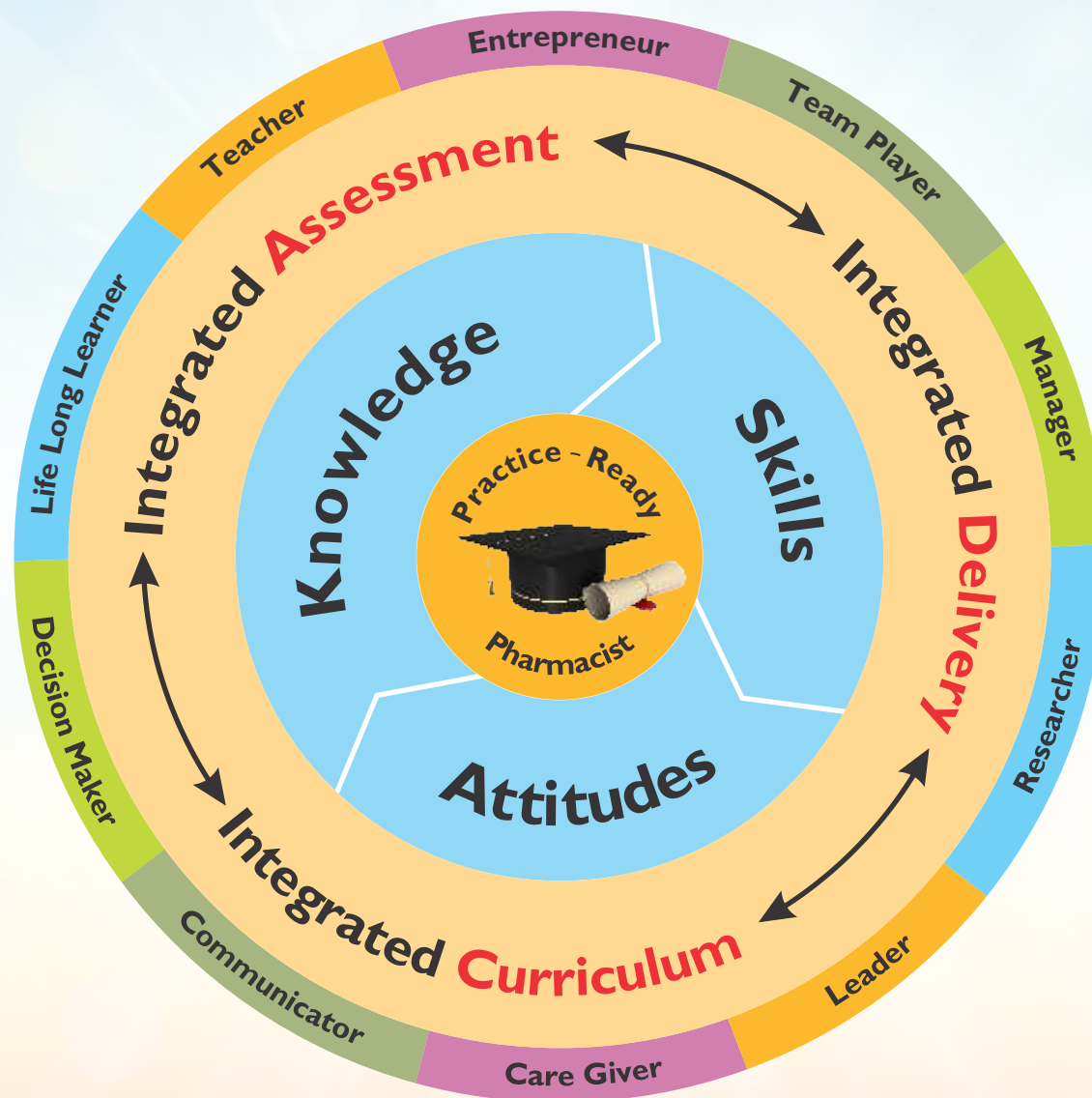
Furthermore, this curriculum integrates the pharmaceutical sciences with clinical therapeutics and patient care to achieve pharmacist competencies of international standards in all sectors - community, primary care, hospital, industry, regulatory, research & development and academia. Notwithstanding the academic excellence, the focus at SCPS is on mentoring and development of the learners to serve as accountable members of the society. The pharmacy educational programs at SCPS is abridged to fulfil the current needs regarding professionalism, marketability, employability, and entrepreneurship.

Program Educational Objectives (PEOs)

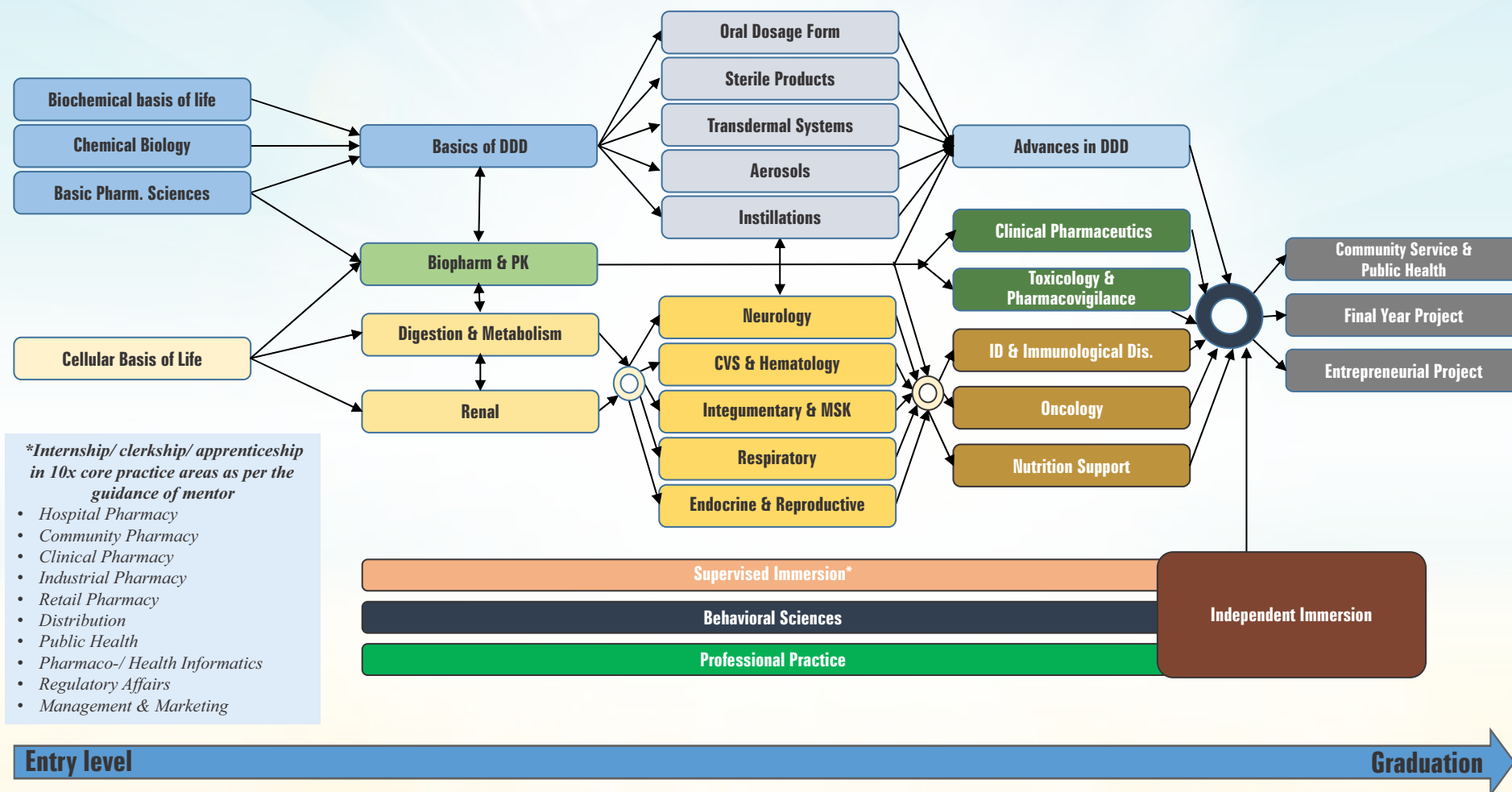
The program curriculum has been designed to achieve the following PEOs:

- PEO I** • To produce graduates who possess adequate knowledge, attitude and skills that ensure that they can effectively contribute to the product development process
- PEO II** • To produce graduates who would be able to integrate and apply the basic principles of pharmaceutical sciences and product development to drug therapy and human health
- PEO III** • To produce graduates who design, develop, apply, assess and optimize the safe, appropriate and cost-effective pharmacotherapy protocols
- PEO IV** • To produce graduates whose competence, innovation and entrepreneurial skills can support and contribute to the development of a pharmaceutical or related industry
- PEO V** • To produce graduates who can harness their knowledge and skills for the design and development of self-sustaining technopreneurial projects that can address the national and international needs
- PEO VI** • To produce graduates with excellent communication, teamwork and leadership skills so that they play an influential role and a key part in shaping better patient care
- PEO VII** • To produce graduates having expertise in interpretation and assessment of patients' conditions to implement and adjust pharmacotherapy plans accordingly.
- PEO VIII** • To produce graduates with skills in optimizing physical and technological resources for managing patient's healthcare needs.
- PEO IX** • To produce graduates capable of designing strategies for the prevention or management of chronic diseases, and the maintenance of health; both at individual and community level.
- PEO X** • To produce graduates having the skills to develop guidelines for assessing the health status of a target population and to practice evidence based, patient-centered care.
- PEO XI** • To produce graduates who can develop as well as implement programs and protocols based on strategic analyses of epidemiological, pharmacoeconomic, and medication-use data and risk-reduction approaches.
- PEO XII** • To produce graduates who can exhibit professional behavior and ethical values in line with the trust bestowed upon the profession by patients, inter-professional collaborators, and society.
- PEO XIII** • To produce graduates who are committed to life-long learning and the professional development process to ensure that they are interested and dedicated to equip themselves with the knowledge of the latest evidence base in the field of pharmacy practice and product development

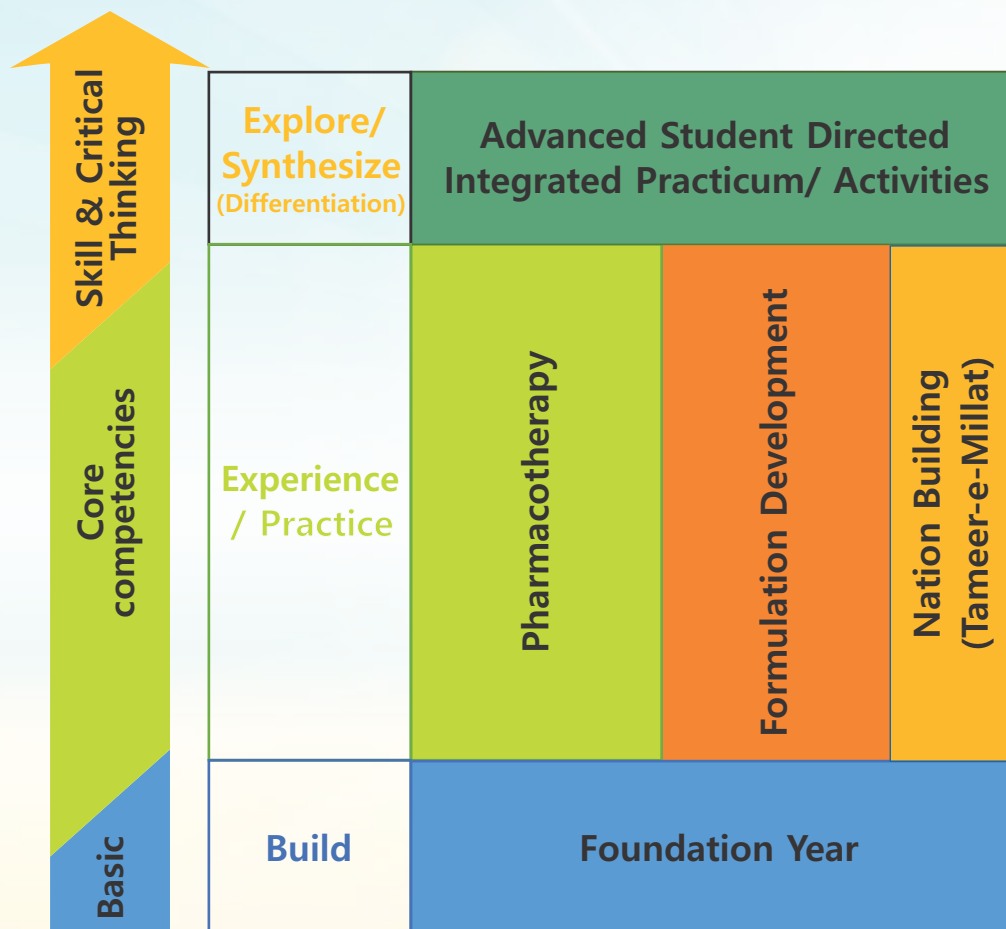
Competency-Driven Curriculum



Vertizontal Alignment of Meta-curricular Academic Streams



Program Design



The student shall be able to develop integrated projects (products/ procedures/ set-ups) to ensure safe, efficacious and cost-effective use of medicines through production, use, promotion, entrepreneurship and scholarship.

The student shall be able to:

- Plan a pharmacotherapeutic intervention plan for the patients suffering from a specific diseased state.
- Develop an understanding of technical, technological, managerial, regulatory and financial requirements of establishing a pharmacist-run practice set-up.
- Contribute to the fulfilment of national needs as an active member of the society as a person and a professional.

The student shall develop an understanding of the biological, chemical and physical processes involved in the preparation of drug molecules/ dosage forms and the mechanisms that lead to the establishment of their pharmacological actions at molecular, cellular, organ and organismal level.

Scheme of Studies

for Pharm. D Program

Year	Blocks	Modules	Courses
Foundation Year (1st Professional)	I	Biochemical Basis of Life I Basic Pharmaceutical Sciences I Cellular Basis of Life I Professional Practice I	<ul style="list-style-type: none"> Organic Chemistry Biochemistry Anatomy and Histology Physiology Pathology Physical Pharmacy Pharmacognosy Forensic Pharmacy Cell Biology Pharmaceutical Microbiology and Immunology Molecular Biology Behavioral Sciences Pharmaceutical Mathematics and Biostatistics
	II	Biochemical Basis of Life II Basic Pharmaceutical Sciences II Cellular Basis of Life II Behavioral Sciences I	
	III	Chemical Biology Basic Pharmaceutical Sciences III Cellular Basis of life III	

Year	Blocks	Modules	Courses
Freshman Year (2nd Professional)	IV	Basics of Drug Discovery & Development I Neurosciences I Principles of Pharmacokinetics	<ul style="list-style-type: none"> Medicinal Chemistry Pharmaceutical Analysis Anatomy and Histology Physiology Pathology Pharmacology and Therapeutics Pharmacotherapy Pharmacognosy Biopharmaceutics Dosage Form Science Clinical Pharmacy Dispensing, Community, Social and Administrative Pharmacy Behavioral Sciences Computer and its Application in Pharmacy Functional English Hands-on Training/Internship
	V	Basics of Drug Discovery & Development II CVS I (CVS) Professional Practice II	
	VI	Oral Dosage Form I CVS II (CVS & Hematology) Behavioral Sciences II	
	VII	Oral Dosage Form II Renal System Integrated Practice I (Retail & Community)	

Scheme of Studies

for Pharm. D Program

Year	Blocks	Modules	Courses
Sophomore Year (3rd Professional)	VIII	Sterile Products Gastrointestinal System Behavioral Sciences III	<ul style="list-style-type: none"> Medicinal Chemistry Pharmaceutical Analysis Anatomy and Histology Physiology Pathology Pharmacology and Therapeutics Pharmacotherapy Pharmacognosy Biopharmaceutics Dosage Form Science Clinical Pharmacy Dispensing, Community, Social and Administrative Pharmacy Behavioral Sciences Computer and its Application in Pharmacy Functional English Hospital Pharmacy Industrial Pharmacy Hands-on Training/Internship
	IX	Instillations Endocrine & Reproductive System Professional Practice III Integrated Practice II (Industrial)	
	X	Aerosols & Inhalations Respiratory System Professional Practice IV Integrated Practice III-A (Hospital OPD)	
	XI	Topical and Transdermal Systems Integumentary System and MSK System Behavioral Sciences IV Integrated Practice III-B (Hospital IPD)	

Year	Blocks	Modules	Courses
Junior Year (4th Professional)	XII	Unit Operations Neurosciences II Professional Practice V-A Integrated Practice IV-A (Clinical)	<ul style="list-style-type: none"> Medicinal Chemistry Pharmaceutical Analysis Anatomy and Histology Physiology Pathology Pharmacology and Therapeutics Pharmacotherapy Pharmacognosy Biopharmaceutics Dosage Form Science Clinical Pharmacy Dispensing, Community, Social and Administrative Pharmacy Behavioral Sciences Computer and its Application in Pharmacy Functional English Hospital Pharmacy Industrial Pharmacy Forensic Pharmacy Pharmaceutical Mathematics and Biostatistics Hands-on Training/Internship
	XIII	Clinical Pharmaceutics Infectious Diseases Behavioral Sciences V Integrated Practice IV-B (Clinical)	
	XIV	Biopharmaceutics I Nutrition Support Professional Practice V-B Integrated Practice IV-C (Clinical)	
	XV	Biopharmaceutics II Oncology Behavioral Sciences VI Integrated Practice IV-D (Clinical)	

Scheme of Studies

for Pharm. D Program

Year	Blocks	Modules	Courses
Senior Year (5th Professional)	XVI	Advances in DDD I Professional Practice VI A Research Methodology I Integrated Practice IV-E (Clinical)	<ul style="list-style-type: none"> Medicinal Chemistry Pharmaceutical Analysis Anatomy and Histology Physiology Pathology Pharmacology and Therapeutics Pharmacotherapy Pharmacognosy Biopharmaceutics Dosage Form Science Clinical Pharmacy Dispensing, Community, Social and Administrative Pharmacy Behavioral Sciences Computer and its Application in Pharmacy Functional English Hospital Pharmacy Industrial Pharmacy Forensic Pharmacy Pharmaceutical Mathematics and Biostatistics Pharmaceutical Management and Marketing Hands-on Training/Internship
	XVII	Advances in DDD II Professional Practice VI B Research Methodology II Integrated Practice IV-F (Clinical)	
	XVIII	Community Service & Public Health Entrepreneurship Final Year Project Student-led Clerkship	

Foreign Seats

10% of the total seats have been reserved for foreign students. The main aim is to encourage and facilitate Pakistani expatriates and foreigners to establish linkages to Pakistan. Moreover, we aim to provide state-of-the-art education facilities to the students from the developing countries at affordable rates. This would help in establishing STMU as an international seat of quality learning and research.

Eligibility Criteria

1. The candidates who meet the following criteria are eligible to apply on the foreign seats:
 - a. Foreign national/ dual national/ overseas (being a Pakistani citizen permanently resident in a foreign country) Pakistani student, and who has studied and passed HSSC 12th grade examination or equivalent from outside Pakistan and is a resident of a foreign country at the time of applying for admission and possess a certificate from the institution last attended to this effect having completed last two years of schooling from abroad.
(or)
 - b. Pakistani student who have completed their previous educational certificate/ degree/ achievement from Pakistan or abroad while being affiliated with a foreign educational system (GCSE/ Cambridge or likewise)
2. Minimum sixty percent (60%) marks in aggregate, in an examination of a course from a foreign university or its examining body or its

education system in at least three subjects i.e. Biology, Chemistry and either Physics or Mathematics and such course must have been duly certified by IBCC as equivalent to HSSC, F.Sc. or Intermediate level of Pakistan.

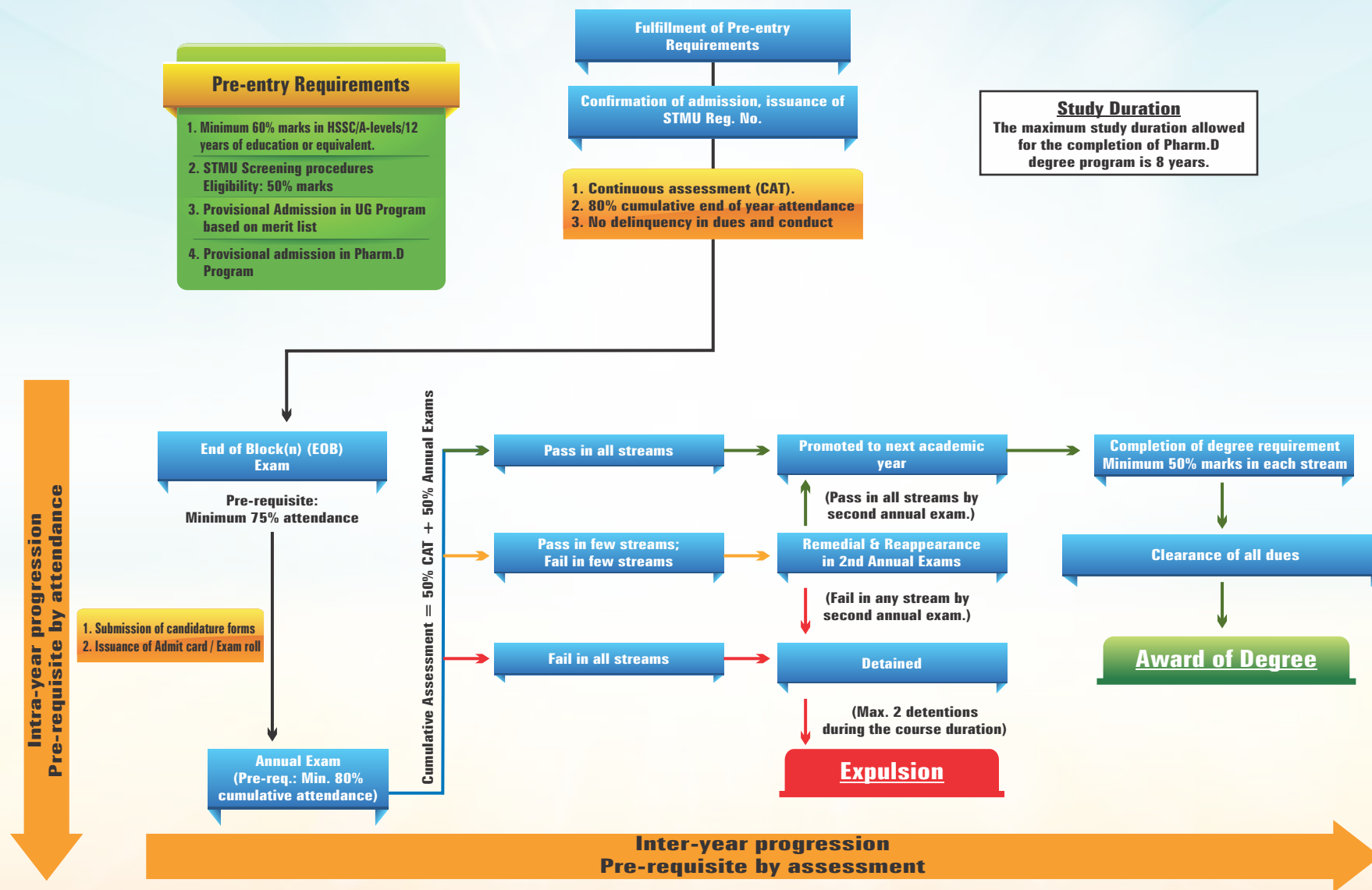
3. Pakistani students having passed from foreign education system (i.e. O levels, A levels etc).
4. Equivalence by IBCC (in case of foreign qualification or where applicable).

Financial, Academic and Administrative Policies

The students admitted on foreign seats should submit USD250 as admission processing fee. **The cumulative annual fee is USD 4000/-** (including tuition fee, enrollment fee, exam fee, Extracurricular Activities fees) exclusive of hostel dues (charged as per actual and subject to availability of room/ seat). Such reserved seats are non-convertible/ non-transferable to regular open merit seats in later year. Enrollment and exam **fee for the remedial/ repeat courses** (2nd Annual Exam in case of failure) shall be **USD 1000**.

The international students should be subjected to the same academic and disciplinary regulations as applicable to the students selected on general merit seats. The STMU Charter, STMU Statutes, Academic Regulations and STMU Code of Ethics & Conduct should be referred for all academic, disciplinary, legislative and administrative issues.

Guidelines to Earn the Degree of Doctor of Pharmacy



Examination and Grading Policy

An effective examination and assessment system is the soul of the education system at STMU. The assessment system is highly structured and includes formative assessment (Assignments, SGDs, PBLs and quizzes) carrying 10% marks and End of Block (EOB) exam carrying 40% marks followed by the University annual exam holding a weightage of 50%. Following is the break-up of overall annual percentage of each assessment modality:

A- Continuous Assessment (CAT)

Formative Assessment	10%
Summative Assessment / End of Block (EOB) Exam	40%
Total	50%

B- University Examination

Annual Exam	50%
Total	100%

- 75% attendance in each module is the minimum eligibility to appear in the End of Block(s) (EOB) Exam of the respective module.
- 80% cumulative End of year attendance is mandatory to appear in the University Annual Exam.

All the examinations are conducted in-line with the Examination Regulations provided in the Conduct of Examinations and Academic Regulations of STMU. In case a student does not follow the decorum of the examination center or s/he is found in possession of any academic material during the exam, s/he would be liable to a disciplinary action as recommended by the Examination Disciplinary Committee which might range from warning to expulsion from STMU.

Grading Policy

Letter Grade	Percentage
A+	90-100
A	80-89
B	70-79
C	60-69
D	50-59
F	<50

*Percentage in decimals will be rounded off as per University Exam Policy.

Master of Philosophy in Pharmacology (Molecular)

[M.Phil. Pharmacology (Molecular)]

2 years program

Degree in brief

NQF Level:	7 (Postgraduate)
Total semesters:	4
No. of semesters/ calendar year:	2 (regular) + 1 (remedial)
Total Credit Hours (CH):	36
Min. duration:	2 Years
Max. allowable duration:	4 Years
Clinical training:	No
Research/ thesis based:	Yes

M.Phil Pharmacology (Molecular) Program

Introduction

Shifa College of Pharmaceutical Sciences is committed to bridging the gap between the basic and applied research in the field of pharmaceutical sciences. Innovative research programs have been developed in light of international guidelines and market-scope to add to the knowledge base and commercial value of pharmaceutical products. M.Phil. Pharmacology (Molecular) program at Department of Basic Medical Sciences, Shifa College of Pharmaceutical Sciences would provide the scholars an integrated, broad-based research training in the field of advanced pharmacology. The program intends to teach pharmacological approaches to integrate a variety of research methods incorporating the techniques and tools of molecular biology, electrophysiological studies on single cells and whole tissues, whole organism studies and human volunteer programs of study. This can lead to new drug discoveries, as well as a better understanding of the way in which the human body works.

The faculty members at Shifa College of Pharmaceutical Sciences have a broad range of research expertise spanning through the various phases of development of effective pharmacological interventions. Their expertise ranges from in vivo models development through to molecular pharmacology, and computational biology through to clinical application. The focus of the research would initially be focused on utilizing integrated physiological and pharmacological approaches with biochemical and molecular techniques to study disease states, underlying mechanisms of disease and drug actions, with a view to identifying novel mechanisms, therapeutic targets and

agents with a clinical and translational focus.

Career opportunities for M.Phil. Pharmacology (Molecular) graduates

The M. Phil. Pharmacology (Molecular) program at Department of Basic Medical Sciences, Shifa College of Pharmaceutical Sciences has been designed to develop the research skills of the scholars based on a deeper understanding of the molecular mechanisms of disease and the potential interventional strategies. This unique program would help graduates to work as inter-disciplinary scientists in various fields including, but not limited to, pharmacology, molecular biology, biochemistry, microbiology, bioinformatics and computational biology. The graduates would be in better position to be potentially employed in the product management side of the pharmaceutical industry and pharmaceutical marketing of biopharmaceuticals. They can also serve as a liaison between for the industry, physicians and patients. The program will enable graduates to be able to work in the areas of clinical trials, regulatory affairs, patenting, manufacturing, sales and marketing and scientific writing. They would be eligible to find employment in hospitals, civil service (DRAP/ DTL), Ministry of Health, pharmaceutical industries, biotech companies, universities and research centers at both national and international level.

Scheme of Studies

M.Phil Pharmacology (Molecular) Program

First Semester

Sr. No.	Theory	CH(s)
1	Core course 1	3
2	Core course 2	3
3	Elective course 1	3
4	Elective course 2	3
Total		12

Second Semester

Sr. No.	Theory	CH(s)
1	Core course 3	3
2	Core course 4	3
3	Elective course 3	3
4	Elective course 4	3
Total		12

List of Core Courses

Course Code	Module	Course Title	CH(s)
PPMC 6103	Theory	Principles of Molecular Pharmacology	3
PBCH 6043	Theory	Molecular Bioinformatics	3
PBST 6013	Theory	Bio-statistics	3
PRTM 6003	Theory	Research Methodology	3

LIST OF ADDITIONAL, NONCREDITED COURSES

Course Code	Course Title**
PNAT 6000	Research Ethics
PNAT 6010	Teaching Methodologies
PNAT 6020	Writing and Communications in Science
PNAT 6030	Technopreneurship

Third & Fourth Semesters

Course Code	Module	Course Title	CH(s)
Core Courses			
PMRW 7006	Research	Synopsis and research work	6
PMRW 7016	Research	Publication(s) and thesis	6
Total Credit Hours			12

List of Elective Courses

Course Code	Module	Course Title	CH(s)
PBCH 6053	Theory	Cell Signaling	3
PPMC 6113	Theory	Pharmacogenetics	3
PPMC 6123	Theory	Modern Techniques in Basic Molecular Pharmacology	3
PPMC 6133	Theory	Fundamentals of Immunopharmacology	3
PPMC 6143	Theory	Neuroinflammation	3
PPMC 6153	Theory	Cancer Biology and Pharmacology	3
PPMC 6163	Theory	ANS Pharmacology	3
PPMC 6173	Theory	Kidney, CVS and Respiratory System Pharmacology	3

PROGRAM SUMMARY

PG Program	Credit Hours
First Semester	12
Second Semester	12
Total Course Work	24
Third & Fourth Semester	12
Total Research Work	12
Total CH(s)	36

Master of Philosophy in Clinical Pharmacy Practice

[M.Phil. (Clinical Pharmacy Practice)]

2 years program

Degree in brief

NQF Level:	7 (Postgraduate)
Total semesters:	4
No. of semesters/ calendar year:	2 (regular) + 1 (remedial)
Total Credit Hours (CH):	36
Min. duration:	2 Years
Max. allowable duration:	4 Years
Clinical training:	Yes
Research/ thesis based:	Yes

M.Phil Clinical Pharmacy Practice Program

Introduction

Shifa College of Pharmaceutical Sciences (SCPS) was established under the umbrella of Shifa Tameer-e-Millat University to cater the needs of the clinical, hospital, industrial and retail pharmacy set up. The institute is in a distinctive position due to its affiliation with a world class health care system at Shifa International Hospital (SIH). It is the only model institute which is in the unique position of being a tertiary care setup along with a teaching institution for Pharmaceutical Sciences through its affiliation with Shifa Tameer-e-Millat University (STMU). This unique position (an institution with hospital & clinical pharmacy setup and a HEC & PCP recognized institution imparting education in pharmaceutical sciences) can be effectively utilized to foster the development of clinical pharmacy practice within the pharmacy profession. It will set both STMU and SIH as a pioneer institute imparting education in this critical domain of clinical pharmacy practice throughout Pakistan.

The M.Phil. in (CPP) is a post graduate program which is first of its kind in the country that would offer the pharmacists a platform to develop advanced skills and knowledge which can be applied for the betterment of their profession and healthcare. This PG program is associated with a particular career path of clinical pharmacy but most skills can be applied to a range of employment situations in clinical, hospital, retail/ community and industrial set up. The program is designed for registered pharmacists who are looking to extend their clinical knowledge and skills in order to succeed in clinically-orientated careers within a variety of healthcare and academic

settings. It would help in building on the existing knowledge of disease states, pharmacology and pharmacokinetics to enable application in a clinical setting. The scholars would be equipped to assess drug therapy for effectiveness, safety, compatibility and use this information to make effective interventions and develop and document pharmaceutical care plans. The program would contribute to producing academicians in the area of Clinical Pharmacy Practice for teaching of relevant undergraduate courses (Pharm. D).

Career opportunities for M. Phil. Clinical Pharmacy Practice Program

The M.Phil. (CPP) program is most useful for hospital pharmacists working at junior grades. It would also serve as a means for Continuing Professional Development (CPD) for pharmacists employed in primary care or academics. To re-iterate, a postgraduate program or M. Phil. is normally a pre-requisite for higher-grade posts. Similarly, community-based pharmacists are increasingly expected to obtain qualifications beyond their first degree to secure posts with a clinical element. Larger chain retail pharmacies in urban areas, both in Pakistan and abroad, have launched the provision of clinical services including health screening, travel clinics, vaccination, anticoagulation, blood pressure assessment and medicines-use reviews. The course covers a broad range of clinical topics, preparing pharmacists for the ever-increasing clinically-orientated roles expected in current practice.

Scheme of Studies

M.Phil Clinical Pharmacy Practice Program

FIRST YEAR

First Semester

Course Code	Module	Course Title	CH(s)
PCTP 6004	Theory	Therapeutics – I	4
PCPA 6003	Theory	Clinical Pharmacy Applications - I	3
PCPL 6001	Clinical	Clinical Pharmacy Learning – I	1
PCRT 6001	Clinical	Clinical Rotations – I	1
PBST 6013	Theory	Biostatistics – I	3
Total Credit Hours			12

Second Semester

Course Code	Module	Course Title	CH(s)
PCTP 6014	Theory	Therapeutics – II	4
PCPA 6013	Theory	Clinical Pharmacy Applications – II	3
PCPL 6011	Clinical	Clinical Pharmacy Learning – II	1
PCRT 6011	Clinical	Clinical Rotations – II	1
PRMT 6003	Theory	Research Methodology – I	3
Total Credit Hours			12

LIST OF ADDITIONAL, NONCREDITED COURSES

Course Code	Course Title**
PNAT 6000	Research Ethics
PNAT 6010	Teaching Methodologies
PNAT 6020	Writing and Communications in Science
PNAT 6030	Technopreneurship

SECOND YEAR

Third & Fourth Semesters

Course Code	Module	Course Title	CH(s)
PMRW 7006	Research	Synopsis and research work	6
PMRW 7016	Research	Publication(s) and thesis	6
Total Credit Hours			12

PROGRAM SUMMARY

PG Program	Credit Hours
First Semester	12
Second Semester	12
Total Course Work	24
Third & Fourth Semester	12
Total Research	12
Total CH(s)	36

Master of Philosophy in Pharmaceutical Chemistry

[M.Phil. (Pharmaceutical Chemistry)]

2 years program

Degree in brief

NQF Level:	7 (Postgraduate)
Total semesters:	4
No. of semesters/ calendar year:	2 (regular) + 1 (remedial)
Total Credit Hours (CH):	36
Min. duration:	2 Years
Max. allowable duration:	4 Years
Clinical training:	No
Research/ thesis based:	Yes

M.Phil in Pharmaceutical Chemistry

Introduction

Shifa Tameer-e-Millat University, with its ideology to provide quality education and extraordinary curriculum at undergraduate level, has served the purpose of benefiting the education sector of Pakistan. The Shifa College of Pharmaceutical Sciences is providing unique services and state-of-the-art facilities to its students according to international guidelines of Pharmacy education. At SCPS, various departments are working for provision of quality education of Pharmacy in relevance to the international key challenges as well as national context. The Department of Pharmaceutical Chemistry serves as the backbone of Pharmaceutical Sciences. The motivated and dedicated faculty of this department is committed to deliver basic and advanced information related to diverse areas of chemistry including physical chemistry, analytical chemistry, organic chemistry, inorganic chemistry, medicinal chemistry, natural products chemistry and biological chemistry. In order to build up the research culture and to cope up with the market demands, SCPS has initiated M.Phil. program in Pharmaceutical Chemistry. A well-structured course outline and scientifically acclaimed instructional and assessment strategies would strengthen the cognitive abilities and practical skills in the younger generation and will enable the scholars to pursue translational research. Ultimately, it will help in identification of research gaps, validation of existing scientific approaches and attainment of impactful findings in the field of pharmaceutical chemistry. Independent or Interdisciplinary research would lead to better output and broad understanding of the drug discovery and development process. It will pave the way

identification of new drug molecules, synthesis of pharmaceutical leads and pharmacophores and derivation of existing pharmacophores to enhance bioavailability and medicinal value. Additionally, the inculcation of High Throughput Screening and Computer Aided Drug Designing will promote the development and identification of novel drug molecules with extended pharmacological applications. These dynamic strategies will enable the scholars to nurture their scientific curiosity, revert intellectual deficit and improve the professional commitment.

Career Opportunities for M.Phil. Pharmaceutical Chemistry graduates

The M.Phil. program in Pharmaceutical Chemistry is designed to produce graduates with critical analytical skills and perseverance to contribute to the benefit of humanity. These graduates would have the opportunity to work in academic and industrial sector for the maintenance of quality control of drug products, method development and validation as well as research and development of pharmaceutical products. Moreover, regulatory bodies and governmental agencies including Drug Regulatory Authority of Pakistan (DRAP) and Drug Testing Labs (DTL) are also recipients of graduates having specialty in Pharmaceutical Chemistry.

Scheme of Studies

M.Phil. Pharmaceutical Chemistry

First Semester

Sr. No.	Theory	CH(s)
1	Core course 1	3
2	Core course 2	3
3	Elective course 1	3
4	Elective course 2	3

Total **12**

Second Semester

Sr. No.	Theory	CH(s)
1	Core course 3	3
2	Core course 4	3
3	Elective course 3	3
4	Elective course 4	3

Total **12**

Third & Fourth Semesters

Course Code	Module	Course Title	CH(s)
Core Courses			
PMRW 7006	Research	Synopsis and research work	6
PMRW 7016	Research	Publication(s) and thesis	6

Total Credit Hours **12**

LIST OF CORE COURSES

Course Code	Course Title	CH(s)
PCHM 6123	Advances in Pharmaceutical Organic Chemistry – I	3
PCHM 6133	Drug Isolation and Characterization Techniques	3
PBST 6013	Biostatistics – I	3
PRMT 6003	Research Methodology – I	3

LIST OF ADDITIONAL, NONCREDITED COURSES

Course Code	Course Title**
PNAT 6000	Research Ethics
PNAT 6010	Teaching Methodologies
PNAT 6020	Writing and Communications in Science
PNAT 6030	Technopreneurship

LIST OF ELECTIVE COURSES

Course Code	Course Title	CH(s)
PCHM 6143	Advances in Protein Chemistry	3
PCHM 6153	Immunochemistry	3
PCHM 6163	Natural Products Chemistry	3
PCHM 6173	Drug Synthesis, Designing and Stability	3
PCHM 6183	Electroanalytical Techniques	3
PCHM 6193	Combinatorial Chemistry	3
PCHM 6203	Polymer Chemistry	3
PBCH 6043	Molecular Bioinformatics	3
PBCH 6063	Advances in Pharmaceutical Biochemistry – I	3
PBCH 6073	Clinical Chemistry	3
PPMC 6183	Drug Metabolism	3
PDDD 6003	Fundamentals of Drug Discovery and Development	3

* additional and non-credited seminars based courses may be offered to enhance the research skills of learners.

PROGRAM SUMMARY

PhD Program	Credit Hours
First Semester	12
Second Semester	12
Total Course Work	24
Third Semester	06
Fourth Semester	06
Total Research Work	12
Total CH(s)	36

Doctor of Philosophy Pharmacology

[PhD (Pharmacology)]
3-6 years program

Degree in brief

NQF Level:	8 (Postgraduate)
No. of semesters/ calendar year:	2
Total Credit Hours (CH):	48
Min. duration:	6 semesters/3 years
Max. allowable duration:	12 semesters/6 years
Clinical training:	No
Research/ thesis based:	Yes

PhD Pharmacology

Introduction

The Ph.D. Pharmacology program offered by the Department of Basic Medical Sciences, Shifa College of Pharmaceutical Sciences has its focus on the study and research in basic, applied and clinical domains. Pharmacology, being an interdisciplinary field, incorporates the disciplines of physiology, biochemistry, organic chemistry, behavioural sciences, and medicine. With the advent of modern technology and consequently new research avenues, the field of pharmacology is bringing together an even wider range of disciplines, resulting in the merger of the traditional aspects of pharmacology with novel approaches drawn from other disciplines, such as biophysics, biomedical engineering, and molecular genetics.

The coursework and research activities in Ph.D. Pharmacology program will focus on deciphering the molecular basis of disease processes as well as their treatment mechanisms explained at the molecular level. Our curriculum emphasizes on interdisciplinary doctoral training in molecular pharmacology while feeding basic and applied side. Students will be trained in the fields of pharmacology, as well as in molecular, genetic, biophysical, and structural approaches to enable them to solve complex problems in basic and clinical pharmacology as well as patient care.

Career opportunities for Ph.D. Pharmacology graduates

The doctoral program in Pharmacology would provide the graduates with a solid foundation in biomedical and clinical sciences with a variety of career options. With the ever-expanding scope of drug discovery and development in genetic, metabolic and infectious diseases, the graduates are expected to attain academic, supervisory and managerial positions in universities, hospitals, pharmaceutical industries, biotech companies, research organizations as well in governmental bodies. They may also pursue a career as an independent academic writer and researcher.

Scheme of Studies

PhD Pharmacology

COMPRISING SEMESTER 1 & 2

Course Code	Course Title	CH(s)
PPMC 8193	Signalling and the Control of Gene Expression	3
PPMC 8203	Modern Techniques in Advanced Pharmacology	3
PPMC 8213	Advances in Immunopharmacology	3
PPMC 8223	Neuroinflammation as a target for Neurological Disease	3
PPMC 8233	Systems Pharmacology	3
PPMC 8243	Seminars in Pharmacology – I	3
PPMC 8253	Seminars in Pharmacology – II	3
PDDD 8013	Advances in Drug Discovery and Development	3

LIST OF ADDITIONAL, NONCREDITED COURSES

Course Code	Course Title**
PNAT 8040	Ethics in Science & Research
PNAT 8050	Instructional and Assessment Methodologies
PNAT 8060	Academic Writing
PNAT 8070	Entrepreneurship & Technopreneurship

COMPRISING SEMESTER 3 to 6

Course Code	Course Title	CH(s)
PDRW 9006	Synopsis and Research work – I	6
PDRW 9016	Research work – II	6
PDRW 9026	Research work – III	6
PDRW 9036	Research work – IV	6
PDRW 9044	Publications	4
PDRW 9052	Open Defence/ Seminar	2

To be assessed by DRAC*** through biannual progress reports **30**

Mandatory requirements:*

1. Completion of 18 credit hours for course work
2. Qualification of Comprehensive examination
3. Satisfactory biannual progress reports
4. Completion of thesis work and positive Local and Foreign evaluation
5. At least two publications from PhD research work (at least one in H.E.C. approved 'W' category journals)
6. Public defense of Ph.D. Thesis / Dissertation

PROGRAM SUMMARY

PhD Program	Credit Hours
First Semester	09
Second Semester	09
Total Course Work	18
Third & Fourth Semester	12
Fifth & Sixth Semester	18
Total Research Work	30
Total CH(s)	48

* As per program structure.

** Additional and non-credited seminars based courses may be offered to enhance the research skills of learners.

*** Departmental Research Advisory Committee (DRAC)

Doctor of Philosophy Pharmaceutical Chemistry

[PhD (Pharmaceutical Chemistry)]
3-6 years program

Degree in brief

NQF Level:	8 (Postgraduate)
No. of semesters/ calendar year:	2
Total Credit Hours (CH):	48
Min. duration:	6 semesters/3 years
Max. allowable duration:	12 semesters/6 years
Clinical training:	No
Research/ thesis based:	Yes

PhD Pharmaceutical Chemistry

Introduction

The Department of Pharmaceutical Chemistry is a vital part of SCPS which stands out for the provision of foundational knowledge of Pharmaceutical Sciences. This department is offering various courses related to organic, inorganic, medicinal, analytical and biological chemistry at both undergrad and postgrad levels. These courses have been designed to produce substantial human resources to bridge the existing gaps in healthcare, academia and research sectors. The PhD program in Pharmaceutical Chemistry is designed to inculcate necessary research skills and specialist knowledge in learners. This program is devised for the training of individuals to improve their theoretical concepts and critical thinking, to generate innovative ideas and contribute to diverse areas of pharmaceutical chemistry. Research in pharmaceutical chemistry encompasses a broad spectrum of activities including synthesis, design, purification, characterization, testing and development of drug molecules. The wide scope and diversity of the program would provide adequate freedom to the PhD scholars for execution of translational research. The research scholars would have the opportunity to work in conventional grounds of chemistry along with inter-disciplinary fields including material sciences, chemical physics, protein science, bioengineering and computational modelling. This approach will empower the individuals to work independently in various processes of drug discovery, development and introduction in the therapeutic mainstream. This program has also been designed to enhance the instructional /teaching, writing, communication and technopreneurship capacities.

Overall, the scholars would be exposed to the cognitive concepts along with practical expertise in fundamental, advanced and applied chemistry to gain the required expertise in their selected areas of interest.

Career Opportunities for PhD Pharmaceutical Chemistry

The PhD (Pharmaceutical Chemistry) program is intended to facilitate the academic and research personnel to work as researchers, academicians, policy makers and managers in academic & research institutes, regulatory bodies and pharmaceutical industries.

Scheme of Studies

PhD Pharmaceutical Chemistry

COMPRISING SEMESTER 1 & 2		
Course Code	Course Title	CH(s)
PCHM 8213	Advances in Pharmaceutical Organic Chemistry – II	3
PCHM 8223	Advances in Natural Products Chemistry	3
PCHM 8233	Advances in Medicinal Chemistry	3
PCHM 8243	Drug Designing	3
PCHM 8253	Advanced Spectroscopic Analysis	3
PCHM 8263	Advanced Chromatographic Techniques	3
PCHM 8273	Crystal Engineering	3
PDDD 8013	Advances in Drug Discovery and Development	3
PBCH 8083	Advances in Pharmaceutical Biochemistry – II	3
PBCH 8093	Advances in Nutritional Biochemistry	3
PPMC 8263	Macromolecular Drugs Targets	3
PCEU 8243	Polymers in Drug Delivery	3
PBST 8023	Biostatistics – II	3
PRMT 8013	Research Methodology – II	3

LIST OF ADDITIONAL, NONCREDITED COURSES	
Course Code	Course Title**
PNAT 8040	Ethics in Science & Research
PNAT 8050	Instructional and Assessment Methodologies
PNAT 8060	Academic Writing
PNAT 8070	Entrepreneurship & Technopreneurship

COMPRISING SEMESTER 3 to 6		
Course Code	Course Title	CH(s)
PDRW 9006	Synopsis and Research work – I	6
PDRW 9016	Research work – II	6
PDRW 9026	Research work – III	6
PDRW 9036	Research work – IV	6
PDRW 9044	Publications	2
PDRW 9052	Open Defence/ Seminar	4
To be assessed by DRAC*** through biannual progress reports		30

Mandatory requirements:*

1. Completion of 18 credit hours for course work
2. Qualification of Comprehensive examination
3. Satisfactory biannual progress reports
4. Completion of thesis work and positive Local and Foreign evaluation
5. At least two publications from PhD research work (at least one in H.E.C. approved 'W' category journals)
6. Public defense of Ph.D. Thesis / Dissertation

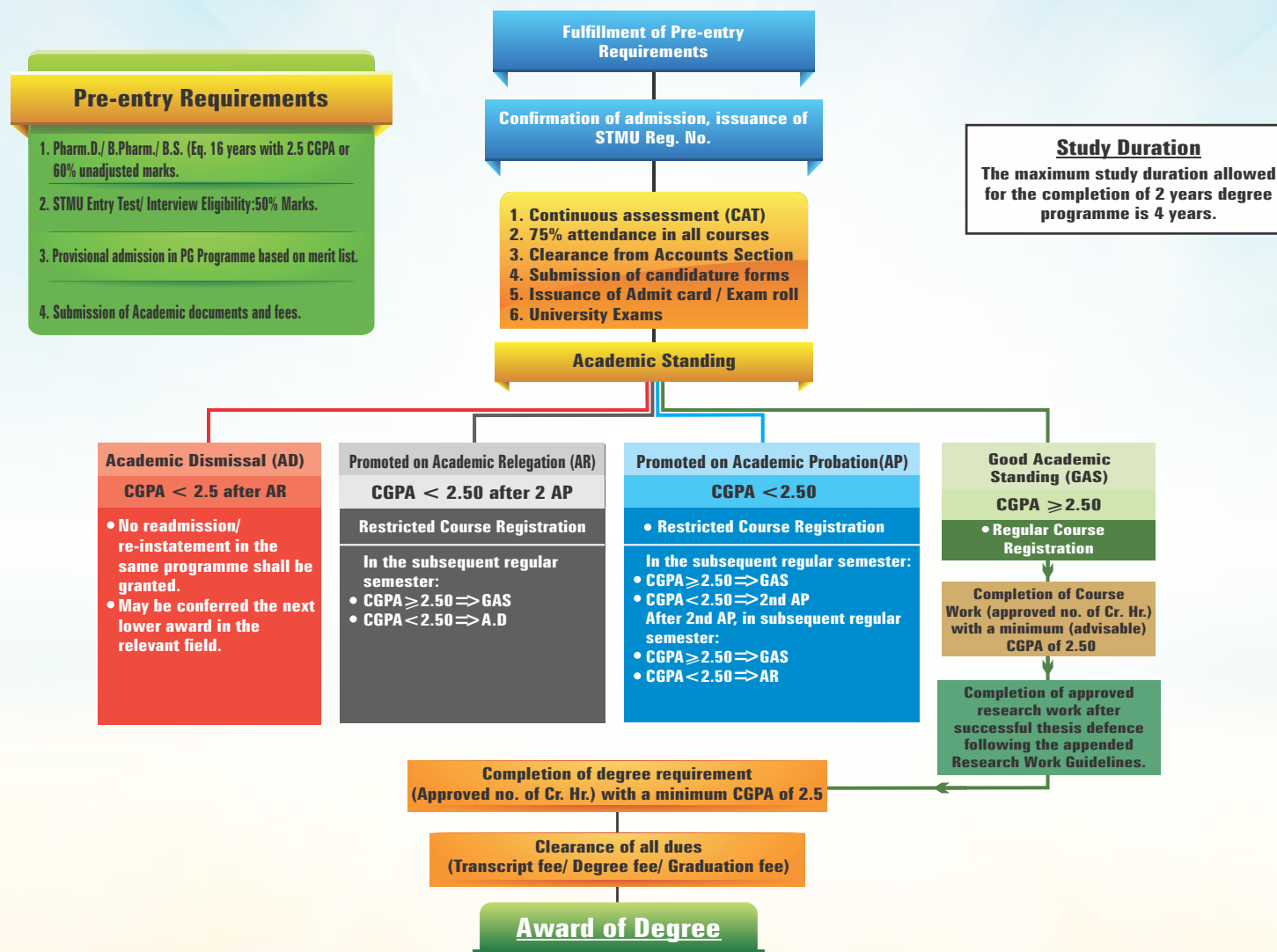
PROGRAM SUMMARY	
PhD Program	Credit Hours
First Semester	09
Second Semester	09
Total Course Work	18
Third & Fourth Semester	12
Fifth & Sixth Semester	18
Total Research Work	30
Total CH(s)	48

* As per program structure.

** Additional and non-credited seminars based courses may be offered to enhance the research skills of learners.

*** Departmental Research Advisory Committee (DRAC)

Guidelines to Earn a Postgraduate Degree*



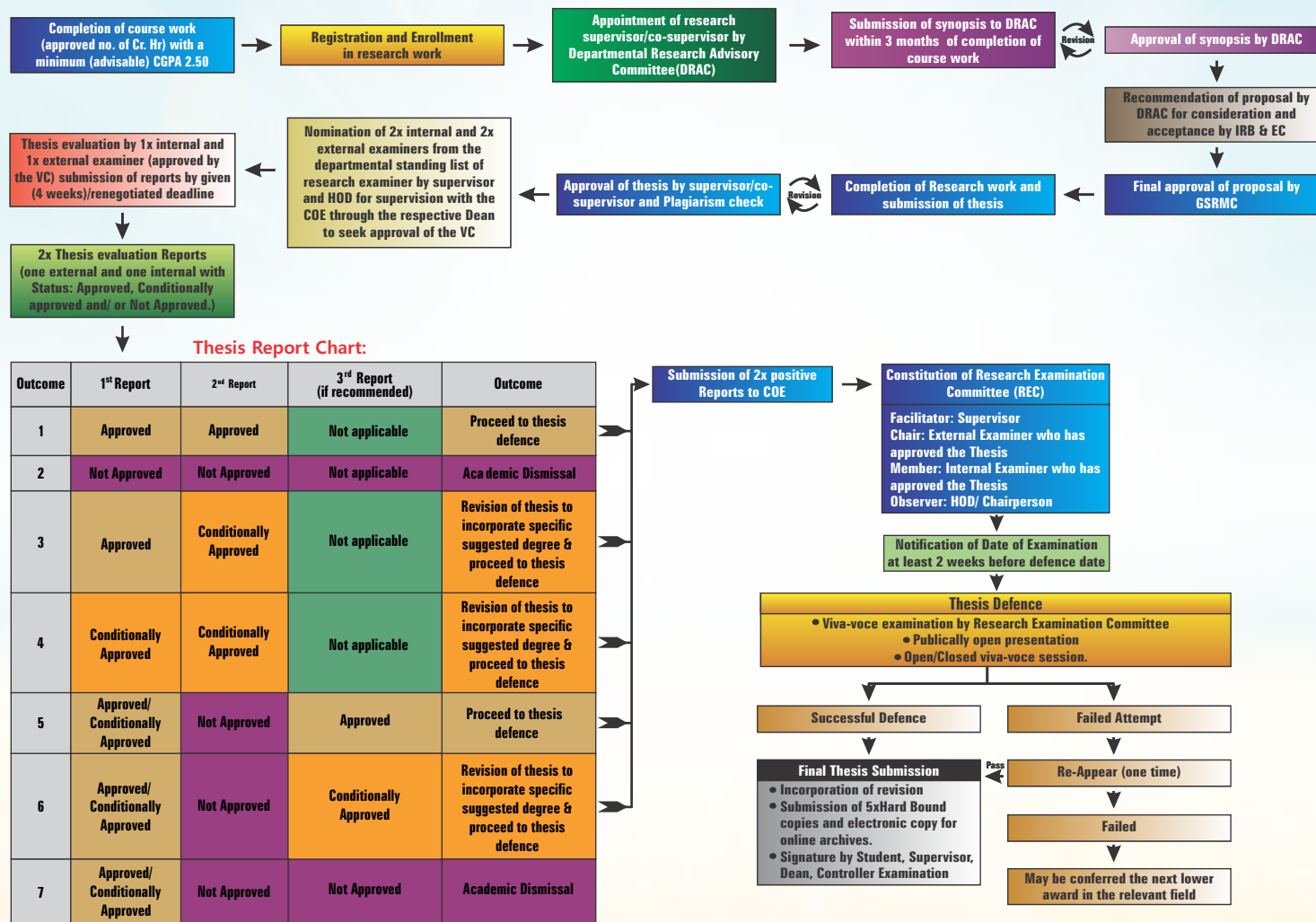
Note:

- The guidelines shall be read in conjunction with the M.S/M.Phil. Regulations, 2018 of the university or as may be determined/notified from time to time.
- Students are advised to regularly consult their respective course advisors regarding their academic performance and improvement throughout their course of studies in the University/Department.
- Course offering shall be made by the department concerned as per the recommendation of Academic Affairs Committee.

* Program specific regulations to be implemented for PhD programs

Research Work Guideline for Postgraduate Studies at STMU*

(To be read in conjunction with Guidelines: How to earn a PG Degree of a Semester Calendar Program)



* Program specific regulations to be implemented for PhD programs

Examination and Grading Policy

- Each course shall carry 100 marks.
- 60 marks shall normally cover classwork (continuous assessments) and 40 for the University examinations (terminal assessment).
- Breakup of these 100 marks shall be determined through the respective programme regulations.
- 75% attendance in each course is the minimum eligibility to appear in the End Semester Exam (ESE) of the respective course(s).
- 100% attendance in clinical rotations is mandatory to appear in the End Semester Exam (ESE) of the respective course(s).

All the examinations are conducted in line with the Examination Regulations provided in the Conduct of Examinations and Academic Regulations of STMU. In case a student does not follow the decorum of the examination center or s/he is found in possession of any academic material during the exam, s/he would be liable to a disciplinary action as recommended by the Examination Disciplinary Committee which might range from warning to expulsion from STMU.



Grading Policy

Letter Grade	Percentage	Grade Point
A	85-100	4.00
A-	80-84	3.66
B+	75-79	3.33
B	70-74	3.00
B-	67-69	2.66
C+	64-66	2.33
C	60-63	2.00
F	Below 60	0.00
W	Withdrawn	-
I	Incomplete	-
(Grade)	Replaced Grade	-
NC	Non-Credit	-
AU	Audit	-
Pass or Fail	Pass/Fail	-

Total points earned = Sum of grade points of individual courses X Sum of gradable credit hours.

Grade Point Average (GPA) = Total points earned / Total Gradable credit hours.

Admission Procedure

Shifa Tameer-e-Millat University is an equal opportunity higher seat of learning/educational institution. There is no discrimination on the basis of sex, religion, race, colour, creed or domicile. Anyone who is academically qualified for admission and fulfills the eligibility criteria to the courses of study offered by the institute is encouraged to apply. There are no quotas and/or reserved seats, except as advised through notifications issued by the Higher Education Commission (HEC), Pharmacy Council of Pakistan (PCP) and The Government of Pakistan.

The selection of students is meticulously done by the Admission Committee on merit and approved by the Dean / Principal of Faculty of Pharmaceutical and Allied Health Sciences/Shifa College of Pharmaceutical Sciences.

Admission Process Flow:

Applicants aspiring to get admission in relevant program at Shifa Tameer-e-Millat University, needs to register online by following the step-by-step guide below;

Step 1: Head to the University website (<https://stmu.edu.pk>) -or- University online admissions portal (<http://lms.stmu.edu.pk>). Register yourself by providing general information and selecting your appropriate program from the list. Once registered, please fill in the required academic details along with scanned copies of your picture, academic transcripts/documents and any valid entry test result you might have appeared during the current admission session (if applicable). In case you have not appeared in any entry test, select STMU entry test.

Step 2: Complete all the steps and print out the application fee voucher. Submit the application fee voucher in designated bank (mentioned on the fee voucher) at any branch throughout Pakistan.

Step 3: Wait patiently for the application fee voucher to be verified by the University accounts and IT department. Once the fee voucher is verified, your

entry test card will be generated on the university online admission portal and an email shall also be sent on your registered email for information. Please take a print of entry test card for presenting to the test invigilation staff on the test day.

Step 4: Appear for the entry test and/or interview on the day and centre as prescribed on the entry test card, and wait for the result announcement. You might want to visit University website for the test result followed by a merit list. If your selected on merit, an email will be generated to your registered email as well.

Step 5: The email in step 4 shall contain all the instructions for your documentary and further screening requirements. You shall be offered provisional admission after successfully clearing your financial dues and codal formalities of the college.

No application for admission will be considered unless completely made out on the prescribed form (hard copy or online) by the candidate. If any of the certificates/documents provided are found to be false or forged, legal action will be taken against the student and his/her admission will be cancelled.

Admission Policy

Initially, all admissions in Shifa Tameer-e-Millat University (STMU) will be provisional. Any candidate, whose particulars, certificates or any other document submitted with the admission form are found to be incorrect or wrong after the verification from the respective examination board, will be struck off from the respective college roll, even if the candidate has been admitted.

No show cause notice will be necessary for any action under this rule of admission. The candidate who fails to report for interview of admission on the prescribed date shall be considered to have forfeited his/her chance of admission in the respective discipline and

shall no longer be eligible to claim his/her merit position during that admission cycle.

The students of other provinces of Pakistan can also apply if they have appeared in the entrance test of their respective province and will provide the result of the test. Previous year's entry test will not be accepted.

If any student during his studies at STMU does not follow college rules or found violating disciplinary rules, will be liable to be expelled from the respective college. All cases of expulsion will be processed by the Dean/Principal after recommendations by the respective disciplinary committee and will be forwarded to the Registrar for final line of action.

Application forms and photocopies of the documents of candidates who are not selected will not be returned.



Eligibility Criteria/ Prerequisites

Doctor of Pharmacy (Pharm.D) Program

Any one of the following qualifications is necessary for an application to be eligible for consideration. All foreign qualifications must be supported by an Equivalence Certificate issued by the IBCC*.

- 60 percent overall and unadjusted score in pre-medical group of Intermediate Certification (F.Sc.) in Pakistan. However, much higher scores prove competitive. B.Sc. group with F.Sc. pre-medical or equivalent are also eligible to apply.

(or)

- British Advanced Level (A-Level) Certification with Biology, Chemistry and Physics/Mathematics. The achievements should be over 60% (pre-medical) in IBCC* Equivalence Certificate.

(or)

- US Grade-12 Diploma (minimum GPA 3.0) accompanied by an Equivalence Certificate from the IBCC* of at least 60 % F.Sc pre-medical qualification (that will require inclusion of Biology, Chemistry, Physics/Mathematics and English in the final 3 years). Higher Secondary School Certificate from other countries with Biology, Chemistry and Physics/Mathematics accompanied by an Equivalence Certificate from IBCC* of at least 60% F.SC Pre-medical qualification.

*The Equivalence Certificate will be obtained from the Inter Board Committee of Chairmen (IBCC). This office attempts to translate foreign qualifications into Pakistani equivalents. It has its own requirements to be met and it can take time. The University has no connections with that

office and is, therefore, unable to provide any information or assistance in this connection. It is the applicants' responsibility to obtain the Equivalence Certificate before an offer of admission could be formalized. International applicants are advised to visit the website of IBCC at www.ibcc.edu.pk and establish contact with it on the following address to seek information and guidance:

Inter Board Committee of Chairmen

Plot No. 25, Street No. 38, Sector G-10/4,
Near Federal Govt. Employees Housing Foundation (FGEHF)
Islamabad, Pakistan. Tel 1: +92-51-933-0251 to 0254
Web: <http://www.ibcc.edu.pk>

M.Phil Programs

The following qualifications are necessary for an applicants to be eligible:

- At least 60% or CGPA of 2.5/4.0 overall and unadjusted score in annual or semester system respectively in B.Pharm. / Pharm.D. degree programs (National Qualification Framework level:6) obtained after 16 or 17 years of education.
- For M.Phil (CPP) the candidates are expected to possess a current, active license/ registration to practice pharmacy in Pakistan or another jurisdiction.



PhD Programs

The candidates are expected to possess 18 years of education (National Qualification Framework level 7) as per HEC National Qualification Framework. The specific program requirements are as follows;

- Basic Qualification: B.Pharm. / Pharm.D.
- Postgraduate Qualification: MS/M.Phil. in relevant field.
- CGPA in Terminal Degree: 3.0/4 or 3.5/5 or First division for annual programs.
- Minimum 60% Cumulative score in GAT-Subject (Pharmacy).
(or)
Minimum 70% Cumulative score in University based Subject test.
- Research Proposal



Fee and Charges

Doctor of Pharmacy (Pharm.D) Program

Pharm. D Fee Schedule[△]

Year	Heads	1 st Biannual (January)	2 nd Biannual (July)	Payment Schedule
Foundation Year (1 st Professional)	Prospectus fee	1,500	-	At the time of seeking admission
	Application/ Test Fee	2,000	-	
	Admission Fee	25,000	-	
	University Registration Fee	10,000	-	One-time charges (After confirmed admission)
	Security (Refundable)	10,000	-	
	Pharmacy Council Reg.	1,000	-	
	Enrollment Fee [#]	11,000	-	Recurring fee for every year
	Tuition Fee [#]	137,500	137,500	
	Examination fee [#]	-	12,000	
	Co-Curricular activities	2,000	-	
	Advance Tax*	As per Government policy		
Total (1 st Year)		200,000/-	149,500/-	

Year	Heads	1 st Biannual (January)	2 nd Biannual (July)	Payment Schedule
Freshman Year (2 nd Professional)	Enrollment Fee [#]	11,000	-	Recurring fee for every year
	Tuition Fee [#]	137,500	137,500	
	Examination fee [#]	-	12,000	
	Co-Curricular activities	2,000	-	
	Advance Tax*	As per Government policy		
Total (2 nd Year)		150,500/-	149,500/-	

Year	Heads	1 st Biannual (January)	2 nd Biannual (July)	Payment Schedule
Sophomore Year (3rd Professional)	Enrollment Fee [#]	11,000	-	Recurring fee for every year
	Tuition Fee [#]	137,500	137,500	
	Examination fee [#]	-	12,000	
	Co-Curricular activities	2,000	-	
	Medical checkup for Clinical rotation at SIH	5,000		Recurring fee in last 3 years
	Advance Tax*	As per Government policy		
Total (3 rd Year)		155,500/-	149,500/-	

Year	Heads	1 st Biannual (January)	2 nd Biannual (July)	Payment Schedule
Junior Year (4th Professional)	Enrollment Fee [#]	11,000	-	Recurring fee for every year
	Tuition Fee [#]	137,500	137,500	
	Examination fee [#]	-	12,000	
	Co-Curricular activities	2,000	-	
	Medical checkup for Clinical rotation at SIH	5,000		Recurring fee in last 3 years
	Advance Tax*	As per Government policy		
Total (3 rd Year)		155,500/-	149,500/-	

Year	Heads	1 st Biannual (January)	2 nd Biannual (July)	Payment Schedule
Senior Year (5 th Professional)	Enrollment Fee [#]	11,000	-	Recurring fee for every year and program completion (one time)
	Tuition Fee [#]	137,500	137,500	
	Examination fee [#]	-	12,000	
	Co-Curricular activities	2,000	-	
	Medical checkup for clinical rotation at SIH	5,000	-	Recurring fee in last 3 years
	Research project supervision	10,000	-	One-time charges
Program Completion	Consolidated Transcript Fee	-	2,000	One-time charges
	Degree Fee	-	10,000	
	Advance Tax*	As per Government policy		
Total (5 th Year)		165,500/-	161,500/-	

△ Fee and charges shall be subject to review and revision as may be prescribed by the University from time to time.

- # 1. Remedial/ Repeat courses shall be charged as per number of streams/ spirals failed and in accordance to its proportion of the total tuition fee.
2. Enrollment and exam fee for the remedial (2nd Annual Exam in case of failure) shall be charged at half rate i.e., Rs. 5500/- and Rs. 6000/- respectively.

* Policy on Collection/Charging of Advance Tax.

1. The University shall collect/charge adjustable advance tax at the rate of 5% provided the annual fee exceeds rupees two hundred thousand (Rs. 200,000). The fee shall include the tuition fee and all charges received by the University, excluding the amount received as refundable.
2. The amount of tax shall be in addition to the prescribed annual fee and once it is deposited with the Government Treasury, the University shall not be liable to make any refund and/or adjustment thereof.

M.Phil Program

Postgraduate Programs in Pharmaceutical Sciences[△]

Semesters	Heads ⁺	Charges (Rs.)	Payment Schedule
1st Semester (12 CH)[#]	Prospectus fee	1,500	At the time of seeking admission
	Application / test fee	2,000	
	Admission fee	25,000	One time Charges
	University Registration Fee	8,000	
	Security (Refundable)	10,000	
	Semester Enrollment Fee	5,500	
	Tuition Fee / Credit Hour (@ Rs. 9,317/CH)	111,804	Recurring fee for every Semester
	Examination fee	6,000	
	Co-Curricular Activities Fee	1,000	
	Advance Tax*	As per Govt. policy	
Total (1st Semester)		170,804/- *	
2nd Semester (12 CH)[#]	Semester Enrollment Fee	5,500	Recurring fee for every Semester
	Tuition Fee / Credit Hour (@ Rs. 9,317/CH)	111,804	
	Examination fee	6,000	
	Co-Curricular / Recreational activities	1,000	
	Advance Tax*	As per Govt. policy	
Total (2nd Semester)		124,304/- *	

Semesters	Heads	Charges (Rs.)	Payment Schedule
3rd Semester (06 CH)[#]	Semester Enrollment Fee	5,500	Recurring fee for every Semester
	Tuition Fee / Credit Hour (@ Rs. 9,317/CH)	55,902	
	Examination fee	6,000	
	Co-Curricular / Recreational activities	1,000	
	Advance Tax*	As per Govt. policy	
Total (3rd Semester)		68,402/- *	
4th Semester (06 CH)[#]	Semester Enrollment Fee	5,500	Recurring fee for every Semester
	Tuition Fee / Credit Hour (@ Rs. 7,700/CH)	46,200	
	Examination fee	6,000	
	Co-Curricular / Recreational activities	1,000	
	Degree fee	10,000	
	Transcript fee	2,000	
	Advance Tax*	As per Govt. policy	
Total (4th Semester)		70,700/- *	

△ Fee and charges shall be subject to review and revision as may be prescribed by the University from time to time.

The number of credit hours may vary according to the course offering of the given academic session/semester keeping in view the availability of resources and other such limitations.

* Policy on Collection/Charging of Advance Tax.

1. The University shall collect/charge adjustable advance tax at the rate of 5% provided the annual fee exceeds rupees two hundred thousand (Rs. 200,000). The fee shall include the tuition fee and all charges received by the University, excluding the amount received as refundable.
2. The amount of tax shall be in addition to the prescribed annual fee and once it is deposited with the Government Treasury, the University shall not be liable to make any refund and/or adjustment thereof.

+ Medical checkup fee is admissible only for the program requiring Clinical observership/ Clerkship/ Internship.

PhD Programs

Doctoral (PhD) Programs in Pharmaceutical Sciences[△]

Semesters	Heads	Charges (Rs.)	Payment Schedule
1 st Semester (9 CH) [#]	Prospectus fee	1,500	At the time of seeking admission
	Application / Processing fee	2,000	
	Admission fee	25,000	One time Charges
	University Registration Fee	8,000	
	Security (Refundable)	10,000	
	Semester Enrollment Fee	5,500	Recurring fee for every Semester
	Tuition Fee / Credit Hour (@ Rs. 15,000/CH)	135,000	
	Examination fee	6,000	
	Advance Tax*	As per Govt. policy	
Total (1 st Semester)		193,000/- *	
2 nd Semester (9 CH) [#]	Semester Enrollment Fee	5,500	Recurring fee for every Semester
	Tuition Fee / Credit Hour (@ Rs. 15,000/CH)	135,000	
	Examination fee	6,000	
	Advance Tax*	As per Govt. policy	
Total (2 nd Semester)		146,500/- *	
3 rd to 5 th Semester (06 CH) [#]	Semester Enrollment Fee	5,500	Recurring fee for every Semester
	Research fee / Credit Hour (@ Rs. 15,000/CH)	90,000	
	Bench fee** / Credit Hour (@ Rs. 1500/CH)	9,000	
	Advance Tax*	As per Govt. policy	
Total		104,500/- *	

Semesters	Heads	Charges (Rs.)	Payment Schedule
6th or Last Semester (which ever is later) (12 CH)[#]	Semester Enrollment Fee	5,500	Recurring fee for every Semester
	Bench fee** / Credit Hour (@ Rs. 1500/CH)	18,000	
	Thesis evaluation & Defense	246,000	
	Degree fee	10,000	
	Transcript fee	2,000	
	Advance Tax*	As per Govt. policy	
Total		281,500/- *	

△ Fee and charges shall be subject to review and revision as may be prescribed by the University from time to time.

The number of credit hours may vary according to the course offering of the given academic session/semester keeping in view the availability of resources and other such limitations.

* Policy on Collection/Charging of Advance Tax.

1. The University shall collect/charge adjustable advance tax at the rate of 5% provided the annual fee exceeds rupees two hundred thousand (Rs. 200,000). The fee shall include the tuition fee and all charges received by the University, excluding the amount received as refundable.
2. The amount of tax shall be in addition to the prescribed annual fee and once it is deposited with the Government Treasury, the University shall not be liable to make any refund and/or adjustment thereof.

** Bench fee and semester enrollment fee shall be admissible in case of extension in research work.

Financial Assistance and Merit Award Program

Financial Assistance:

1. A committee constituted by the Syndicate for the purpose of Financial Assistance shall select students for the scholarships and other funds on the basis of their applications on the prescribed form.
2. For the purpose of fund collection, a form will be circulated to all the members of STMU/Shifa Family and collected before the 30th September each year (contribution to be added to separate endowment fund).
3. A student would be eligible for only one financial award, in one category, at any time (the prize award is not included in this category).
4. 20% discount will be granted in the tuition fee for the second and onward siblings.
5. 20% discount will be granted in the tuition fee for the children of the current full-time employees of the University and its teaching hospital (Shifa International Hospitals Ltd).
6. 25% waiver will be granted in the tuition fee for a student whose father/legal guardian has died during the course of study of the program in which the student is enrolled at that time.
7. In some special cases committee will be authorized to decide and grant the financial aid.

Prize Money:

8. The prize money will be a separate category—i.e., it shall be evaluated on the basis of academic achievements and shall not be mixed with the other financial assistance and/or benefits.

9. All the cases related to award of the prize money shall be dealt by a standing committee whose decision shall be considered final.
10. The amount of prize money shall be calculated on the regular Tuition fee of the same semester/Year in which the position is determined and shall be distributed as follows:
 - a. First Position = 15%
 - b. Second Position = 10%
 - c. Third Position = 5%
11. The evaluation criteria shall be as follows:
 - a. Semester System: On securing the SGPA of 3.00 or above on the 4.00 scale.
 - b. Annual System: On securing at least 80% aggregate in the annual professional examinations in any year.
12. There shall be only three prizes in the category of Prize Money. However, if there are two students who secure first position then both the students shall be awarded the prize money of the first position and the remaining one prize shall be awarded to the second position holder(s) with the prize money of the second position and no prize shall be awarded to the third position holder(s). Provided further that if there are three or more students on the first position then all the students shall

be awarded the prize money of the first position and no prizes shall be awarded to the second and third positions holders. The same criterion shall be applied on the second and third positions if more than one student is securing such position(s).

13. The prize winners shall be awarded the money in the form of cheque or scholarship on account of their tuition fee of the next semester/year. Position holders of the final semester/year shall be awarded the prizes in the form of cheque.
14. In case of any disciplinary issue against the prize/scholarship holder during the semester/year, he/she shall not be awarded any prize or scholarship.
15. The prize money certificates shall be distributed to the position holders in the convocation or other events as feasible.

Payment of Fee and Charges in Installments:

16. Depositing of fee and charges in installments shall only be a privilege and not the right of the students.
17. No more than 10% of the students of a batch shall be allowed to pay their fee and charges in installments for a regular academic session (year or semester as the case may be).
18. A student may be allowed to deposit his/her fee and charges of a semester/session in maximum two installments. The first installment shall be payable within the stipulated time before the start of the classes of the semester/session. The amount of the first installment shall not be less than 50% of the total payable amount of the semester/session. The second installment shall be payable before the end of mid of the

semester/session. The student shall have to apply on the prescribed form for submission of fee in installments within the stipulated time period before the start of the classes of the semester/session.

19. The applications for deposit of fee and charges in installments shall be evaluated by a Committee strictly on need-cum-merit basis. The recommendations of the Committee shall be forwarded by the Principal/Head of the respective college/departments to the Treasure/CFO for further processing. Late fee charges shall be applied in case the payments are made after the stipulated time.
20. The employees of Shifa Family and their dependent children who are students of the university may be allowed to deposit their fee and charges on monthly installments provided that nothing shall be outstanding at the time of terminal examinations of the academic session (year or semester as the case may be). Provided further that these students shall not be counted towards the number/percentage mentioned in section 16 above.

Funding Sources:

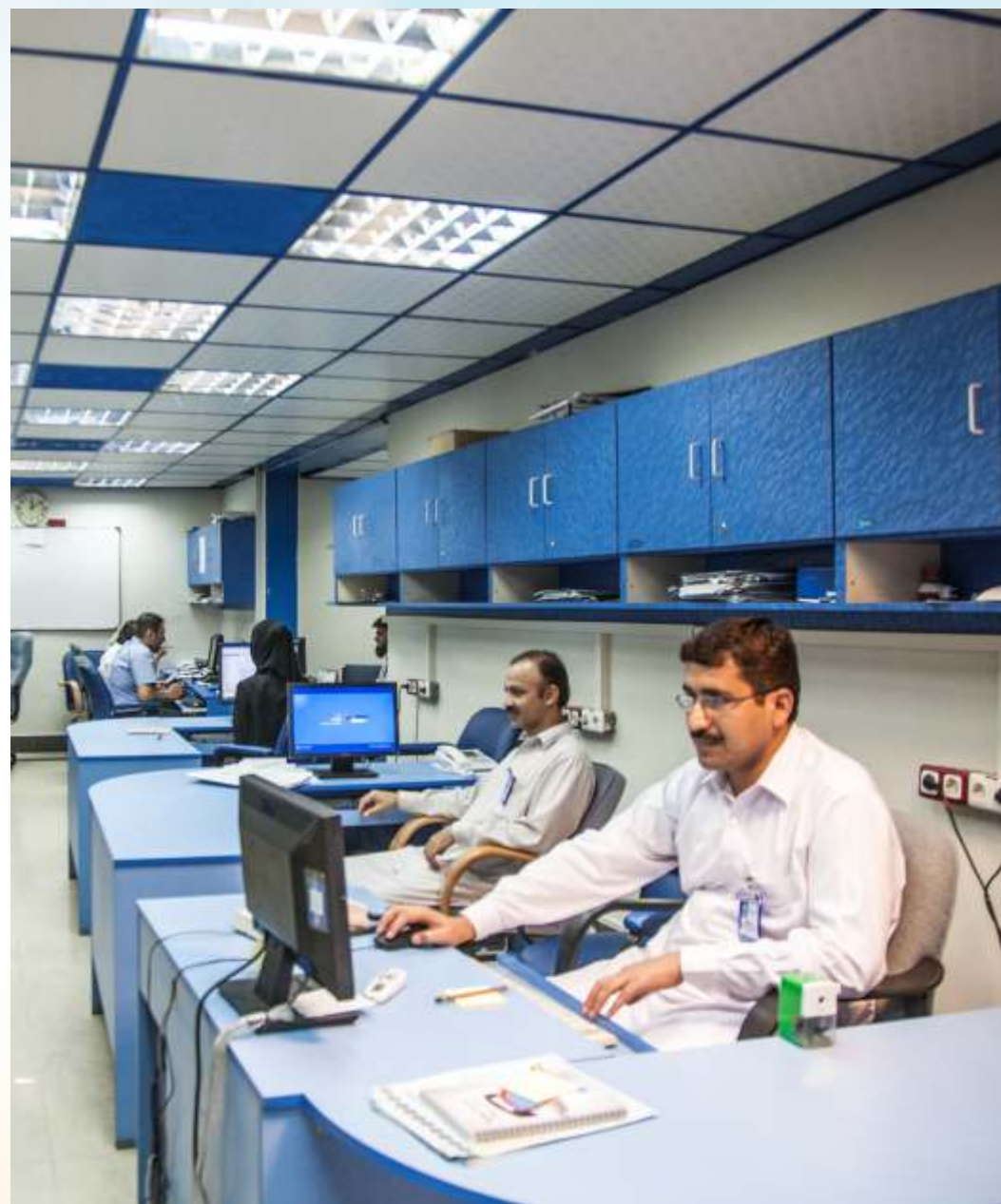
The treasurer's office of the University tabs both individual sponsors and Trust organizations for memorandums to financially accommodate and facilitate needy students. The same is pursued through eligibility for various government financing schemes such as "Punjab Educational Endowment Fund (PEEF)" and institutional funding programs etc.

Statutes Regarding Fee Refund:

1. Fee shall be refunded to candidates who desire to migrate/discontinue studies upon prior application and approval in writing for the same.
2. The fee shall be refunded as follows:

Percentage of Fee	Timeline of Refund Application for Semester Calendar Programs	Timeline of Refund Application for Annual Calendar Programs
Full (100%) Fee Refund	Up to 7th Day of Commencement of Classes of the Semester	Up to 15th Day of Commencement of Classes of the Year
Half (50%) Fee Refund	From 8th to 15th Day of Commencement of Classes of the Semester	From 16th to 30th Day of Commencement of Classes of the Year
No (0%) Fee Refund	From 16th Day of Commencement of Classes of the Semester	From 31st Day of Commencement of Classes of the Year

3. Percentage of fee shall be applicable on all components of fee, except for security and admission charges including prospectus, admission processing, admission fee, etc.
4. Timeline shall be calculated continuously—i.e., covering both weekdays and weekend.
5. No refund including security deposit may be permissible if the admission/registration of a student is cancelled upon any disciplinary grounds/violation of the code.
6. The Security Deposit to the graduates shall be refunded when the respective graduation ceremony is done.



Students Conduct and Discipline

For detailed regulations, kindly contact Student affairs office or visit <https://stmu.edu.pk/academic/academic-regulations/>.

Every student shall observe the following code of conduct in the University premises or its constituent colleges teaching/practicing places/ during official tours/assignments and in the University administered hostels (on and off-campus) and places of other activities being held under the auspices of the University/constituent colleges:

- a. Loyalty to Pakistan and refraining from doing anything which is repugnant to its honour and prestige in any way.
- b. Respect for convictions and traditions of others in matters of religion, conscience and customs.
- c. Truthfulness and honesty in personal dealings and dealings with other people.
- d. Respect for elders and politeness to all, especially to women, children, the weak and the helpless.
- e. Special respect for teachers and administration of university.
- f. Cleanliness of body, mind, speech and habits.
- g. Helpfulness to fellow beings.
- h. Devotion to studies and prescribed co-curricular activities.
- i. Observance of thrift and protection of public property.
- j. Observance of the rules and regulations of the university in force from time to time.

Prohibited Acts

The following acts are prohibited for students:

- a. Smoking in the university premises except on designated places, if any.
- b. Consumption of alcoholic drinks or other intoxicating drugs within the university or during instructions, sports or cultural tours or entering such places or attending any such tour or coming to university intoxicated/drunk.
- c. Organising or taking part against the university in any agitational activity inside the campus or organizing any clubs or societies of students which do not conform to the university's policies and regulations.
- d. Collecting any money or receiving funds or pecuniary assistance for or on behalf of the university except with the written permission of the Head of department or any other person authorized on management's behalf.
- e. Staging, inciting or participating in or abetting any walk-out, strike or other form of agitation against STMU, its constituent colleges, institutes and departments or its teachers, officers or authorities; inciting others to violence; disruption of the peaceful atmosphere in any way; making inflammatory speeches or gestures which may cause resentment; issuing of pamphlets or cartoons which cast aspersions on the teachers or staff or University authorities/bodies; doing anything in a way likely to promote rift and hatred amongst the students; issuing statements in the press; making false accusations against or lowering the prestige of STMU or its teaches, administrators, staff or bodies.

Acts of Indiscipline

A student shall be deemed to have committed an act of indiscipline, if he / she.

- a. Commits a breach of Student Code of Conduct as specified or commits a prohibited act as specified in the code.
Disobeys the lawful orders of a teacher or other person in authority.
- b. Habitually neglects work or absents himself/herself from the classroom without valid reason
- c. Damages public property or the property of fellow students or any teacher or employees of STMU and its Constituent
- d. Colleges/Institutes/Departments.
- e. Does not pay the fees, fines, or other dues payable under the laid down rules and regulations.
- f. Uses indecent language; wears immodest dress; makes indecent remarks; gestures; behaves in a disorderly manner; commits any criminal, immoral or dishonorable act (whether committed within the university or outside) or any act which is prejudicial to the interests of STMU.

Action against Misconduct

Every member of the faculty, admin, University, college management and staff shall have the power to check any disorderly or improper conduct of, or any breach of the regulations, by students in any part of the premises of the university and its constituent colleges/institutes or outside when the visit is sponsored or organized by it. Misconduct in a classroom when a student is under the charge of a teacher shall not be allowed and a punitive action such as a fine, removal from the classroom or a punishment of greater magnitude may be imposed as decided by the authority so empowered.

Penalties

A student guilty of an act of indiscipline shall be liable to the penalties specified below or promulgated through written orders/notifications:

- a. Removal from classroom, laboratory, or field work, for a maximum period of two contact hours.
- b. Expulsion from games or field work for not more than one
- c. week.Suspension from classes for a period not exceeding one week.
- d. Fine not exceeding Rs 10,000/- for any offense.
- e. Removal from a position of authority on the advice of the Student Advisor / HOD.
- f. Expulsion from the hostel
- g. Cancellation of remission of fees / assistantship / scholarship etc.
- h. Rustication for one or more semester
- i. Expulsion from the university.

Procedure in Case of Breach of Discipline

A teacher, staff member or officer whose presence or in relation to whom an act of indiscipline has been committed or who gets to know of such act, may deal with the case himself/herself, or if in their view the case is one which can be more appropriately dealt by another authority or which warrants a penalty of greater magnitude than they are competent to impose, shall proceed as follows:

- a. Refer the case to the Head of Department/Program Coordinator or the higher authority as the case may be.
- b. All cases of serious breach of discipline will be referred to the Disciplinary Committee for investigation which will either impose the penalties if within its powers or recommend heavier punishments to the Principal/Director of the Colleges/Institutes as the case may be.
- c. When a case against a student is referred to the Disciplinary Committee, it may, if it deems fit, suspend the student from the

classes till the finalization of the case, with the approval of the Head of the College/Institute.

Offences during Examination

Cases of indiscipline in or around the Examination Hall, and use of unfair means, shall be dealt with by the Examination Committee in accordance with examination regulations.

Chairpersons of Independent Teaching Departments of the university shall have same power as those of Head of Constituent Colleges/Institutes of STMU.

Dress Code

Dress code will be based on the general principles of decency and in conformity with the social norms of the country. Dress prescribed for particular learning environment or occasion like apron, lab coat, gown etc shall be mandatory as per guidelines of the colleges.

Student Card

Students will be issued University Identity Cards. They will be required to display their ID Cards at all times in the campus and present to authorised persons on demand.



Contact Us

Title	Contact Person	Contact Number	Email Address
Dean's Office	Mr. Asim Ahmed (PS to Dean)	051-8438061-65 (Ext 102)	ps.dean.scps@stmu.edu.pk
Academic Advisor	Prof. Dr. Sagheer Ahmed	051-8438061-65 (Ext 501)	sagheer.scps@stmu.edu.pk
Student Affairs Office	Ms. Maimoona Shah Zaman	051-8438061-65 (Ext 103)	maimoonasao.scps@stmu.edu.pk
Advisor Student Affairs	Dr. Mustafeez Mujtaba Babar	051-8438061-65 (Ext 502)	studentaffairs.scps@stmu.edu.pk
Admissions Office	Mr. Muhammad Farhan	051-8438061-65 (Ext 104)	farhan.sao.scps@stmu.edu.pk
Online Admissions Query	Mr. Shahzad Ahmed	051-8493009	online.admissions@stmu.edu.pk
Head Admissions Committee	Dr. Fawad Naeem	051-8438061-65 (Ext 303)	fawad.scps@stmu.edu.pk
Finance and Accounts Office	Mr. Faisal Kiani	051-8493057	faisal.kayani@stmu.edu.pk
In-charge Hostel	Mr. Muhammad Azam	051-8464590	admin.secretariat@stmu.edu.pk
Admission Queries on WhatsApp	Mr. Muhammad Farhan	0349-9217277	



Postal Address: 72 Jaffar Khan Jamali Road, Adjacent FBISE, Sector H-8/4, Islamabad

Website: <https://stmu.edu.pk>



Convocation Ceremony of Pharm.D. Class of 2019



Shifa Tameer-e-Millat University

شفا تعمیر ملت یونیورسٹی



CONVOCATION



Orientation Ceremony of Pharm.D.



Shifa Tameer-e-Millat University
Shifa College of Pharmaceutical Sciences
72 Jaffar Khan Jamali Road, Adjacent FBISE
Sector H-8/4, Islamabad, Pakistan
Tel: 051-8438061-65
admissions.scps@stmu.edu.pk
<https://stmu.edu.pk>